

Connecting Atom Board to PC

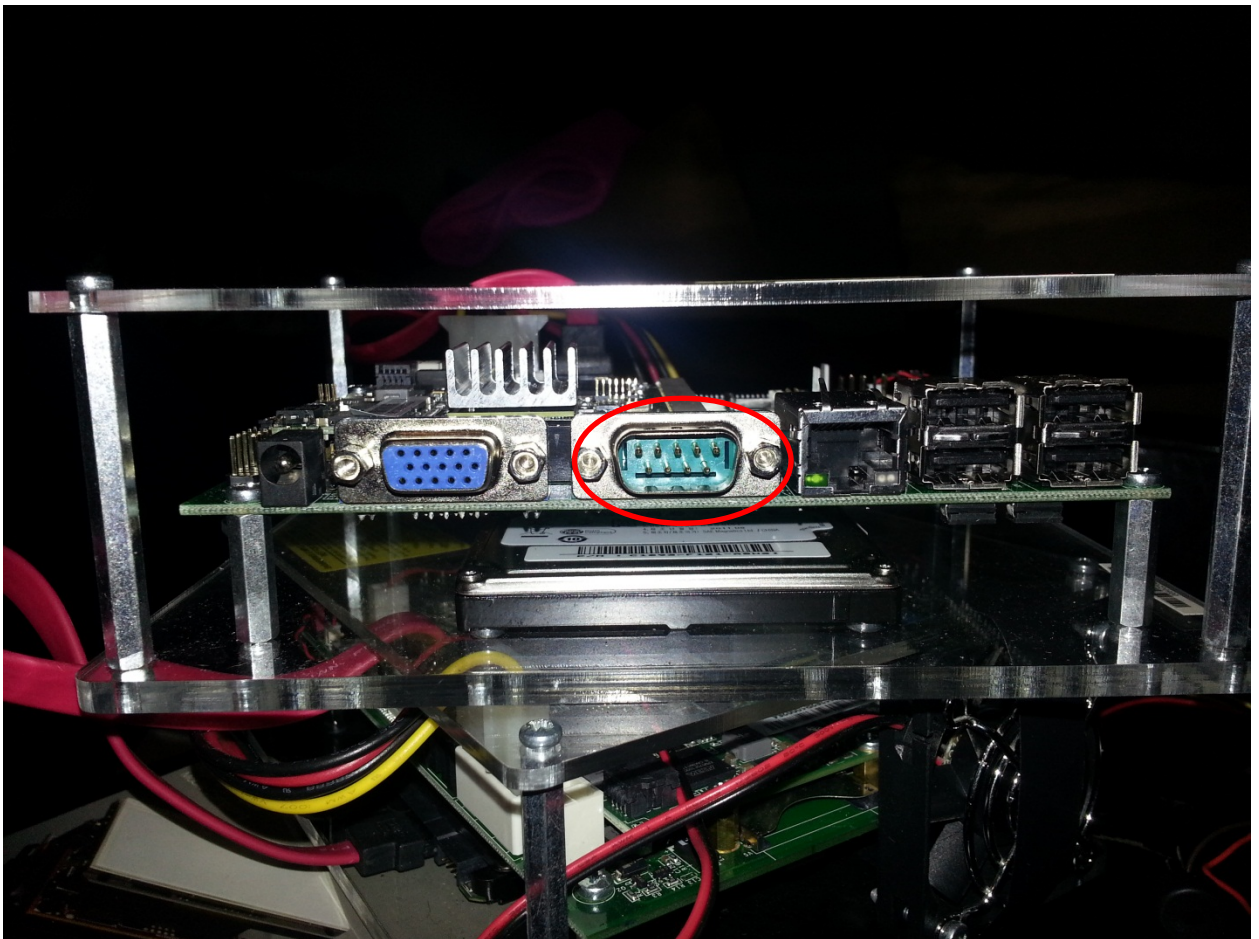
By Keir Morris and Charles Kim

www.mwftr.com

There are multiple ways to connect to the Atom Board, but in this guide we would be connecting using the serial port on the Atom Board.

You would need a serial to serial cable or usb to serial cable in order to connect the Atom Board to a regular PC. In this guide I would be using a usb to serial cable.

1. First install the drivers for the serial cable on your PC.
2. Locate the serial port on the Intel board shown below (in red oval).

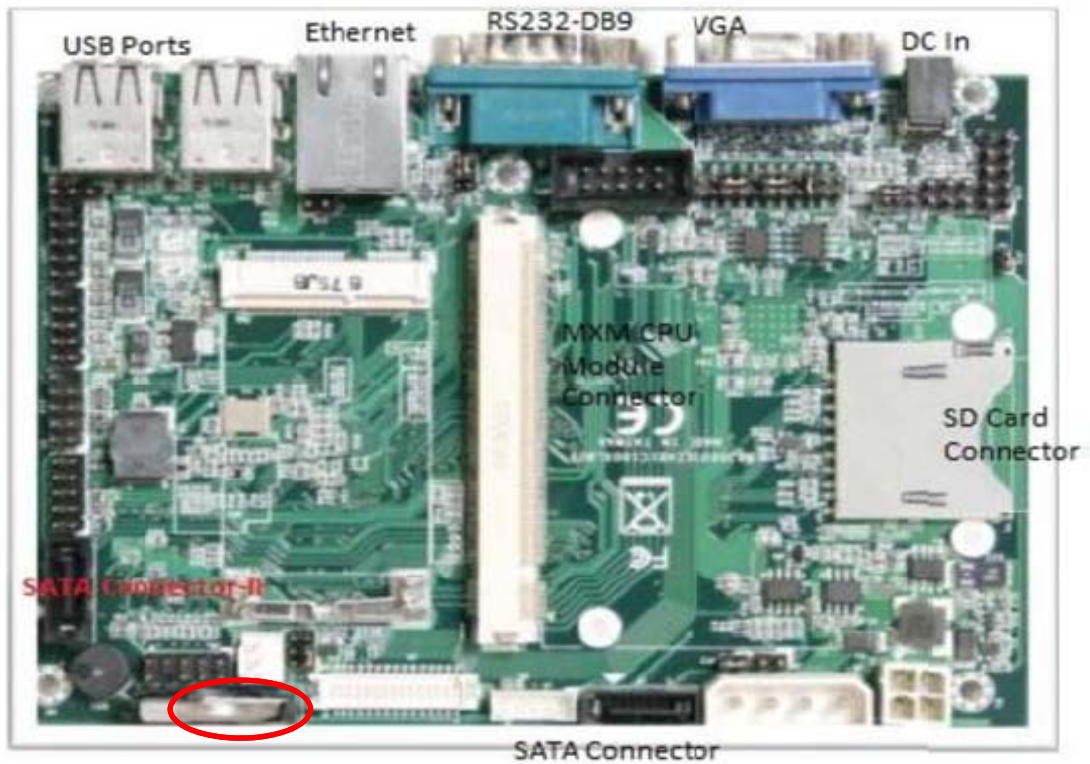


3. Connect the serial to USB cable to you intel board then to your pc as shown below. (Note you will also need to have a female to female gender changer or a female to female serial cable also shown below)

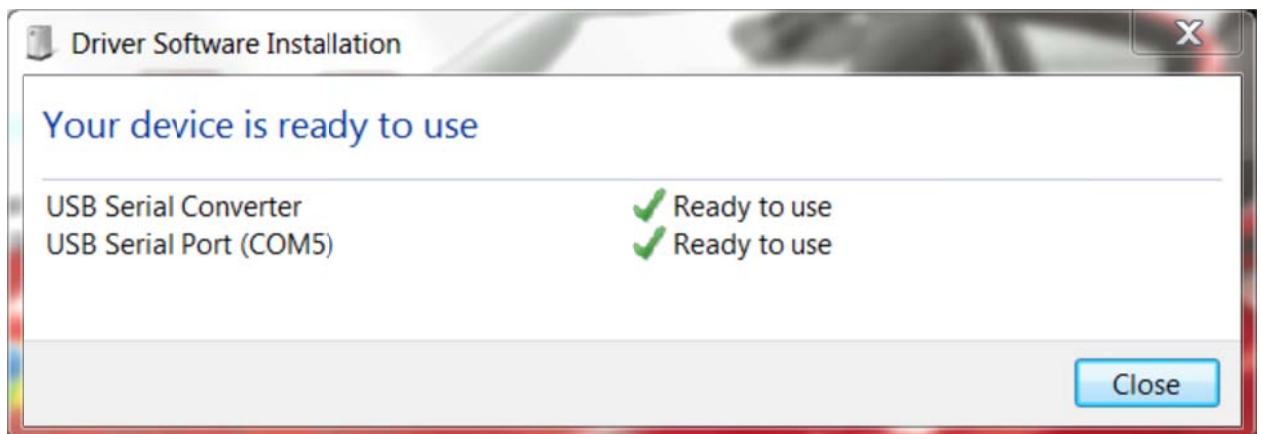


On right (female to female gender changer) Left (female to female serial cable)

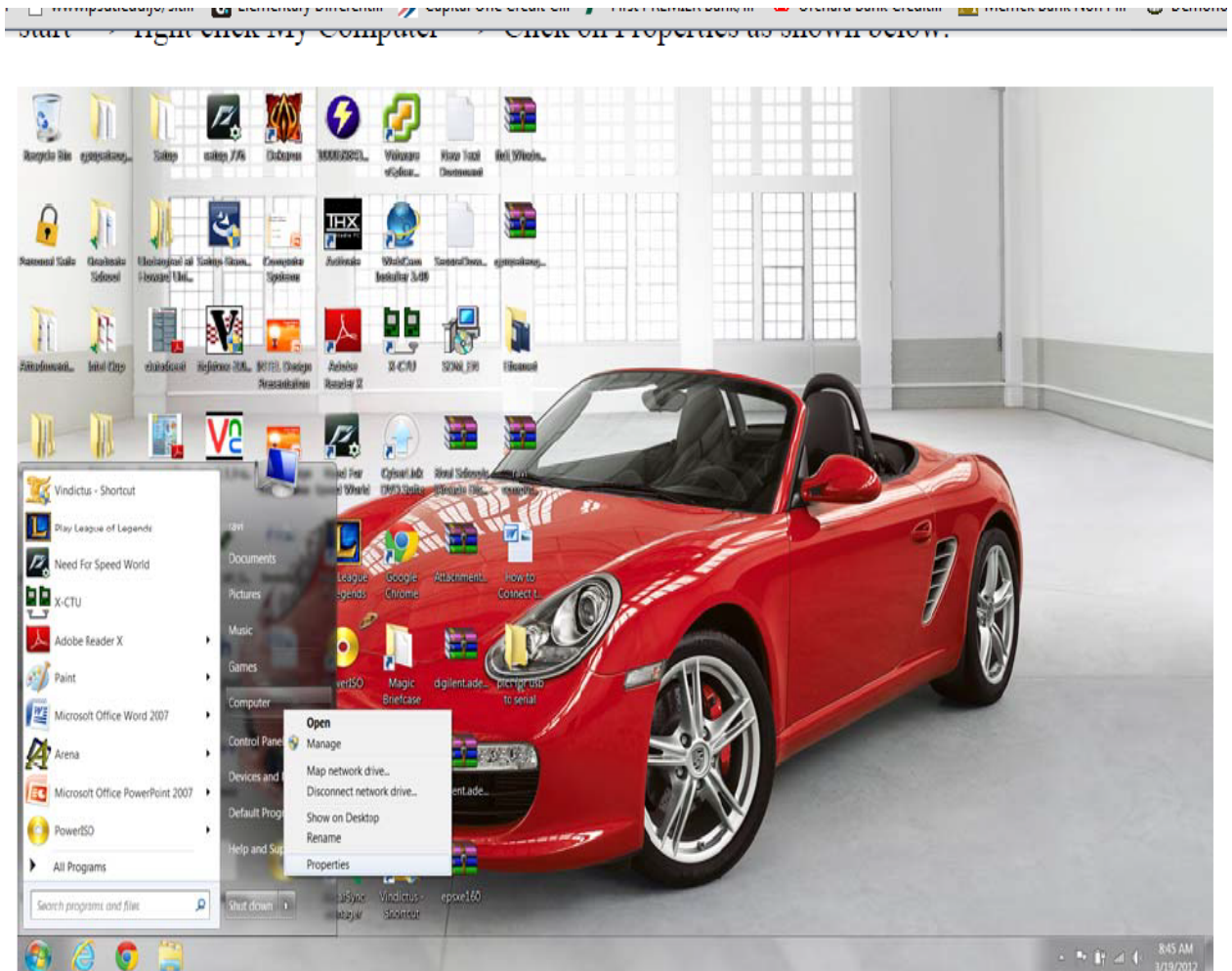
4. Power on the Intel board



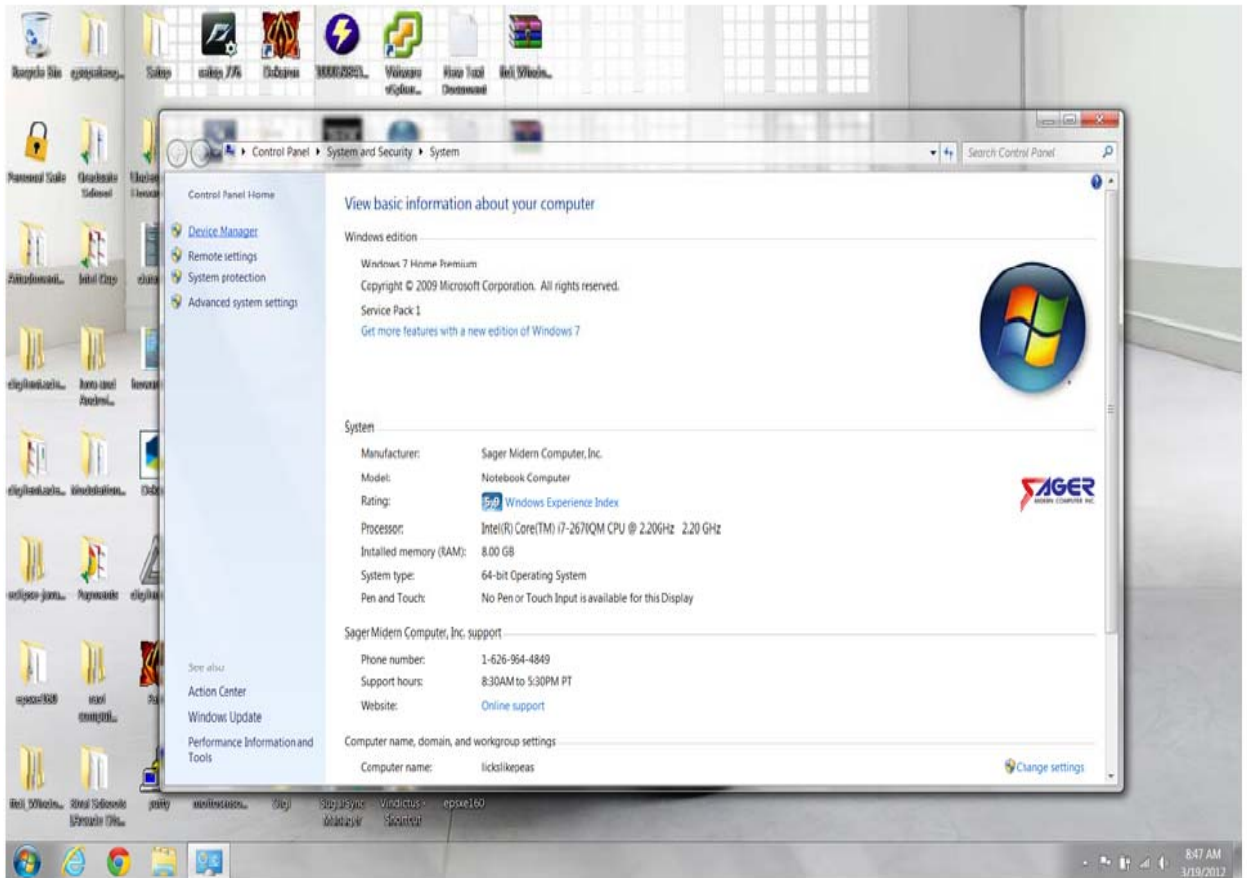
5. The Intel board should connect to your PC automatically most of the time.



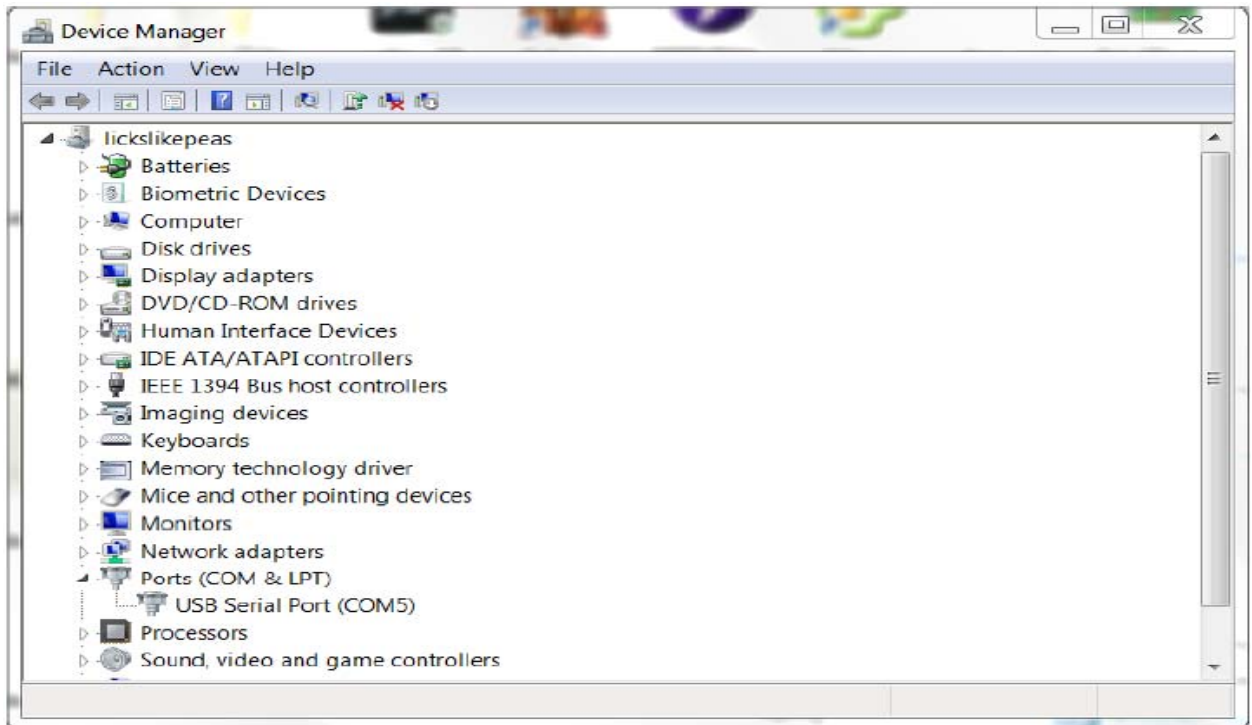
- Then you would need to confirm the COM port that the cable is using on your PC. So click on start ---> right click My Computer ---> Click on Properties as shown below.



7. The properties window should pop up. Then you would need to click on the Device Manager link on the left on the window as shown below.



8. So now the Device Manager window should pop up. Now drop down the COM port list and you would see the actual COM port your cable is using as shown below.

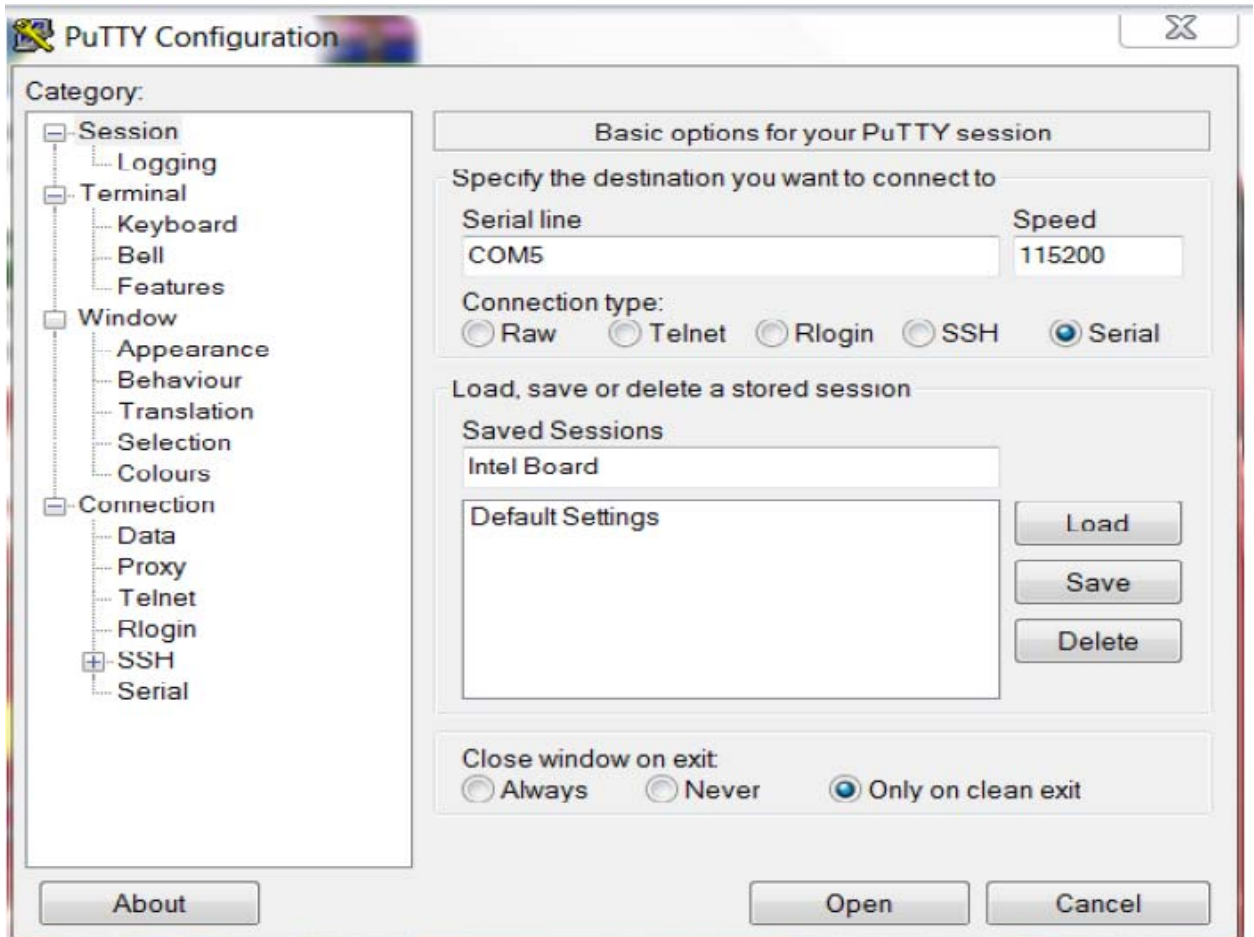


Now you would need a serial communication application to communicate with the Atom Board. In this guide I would be using Putty.

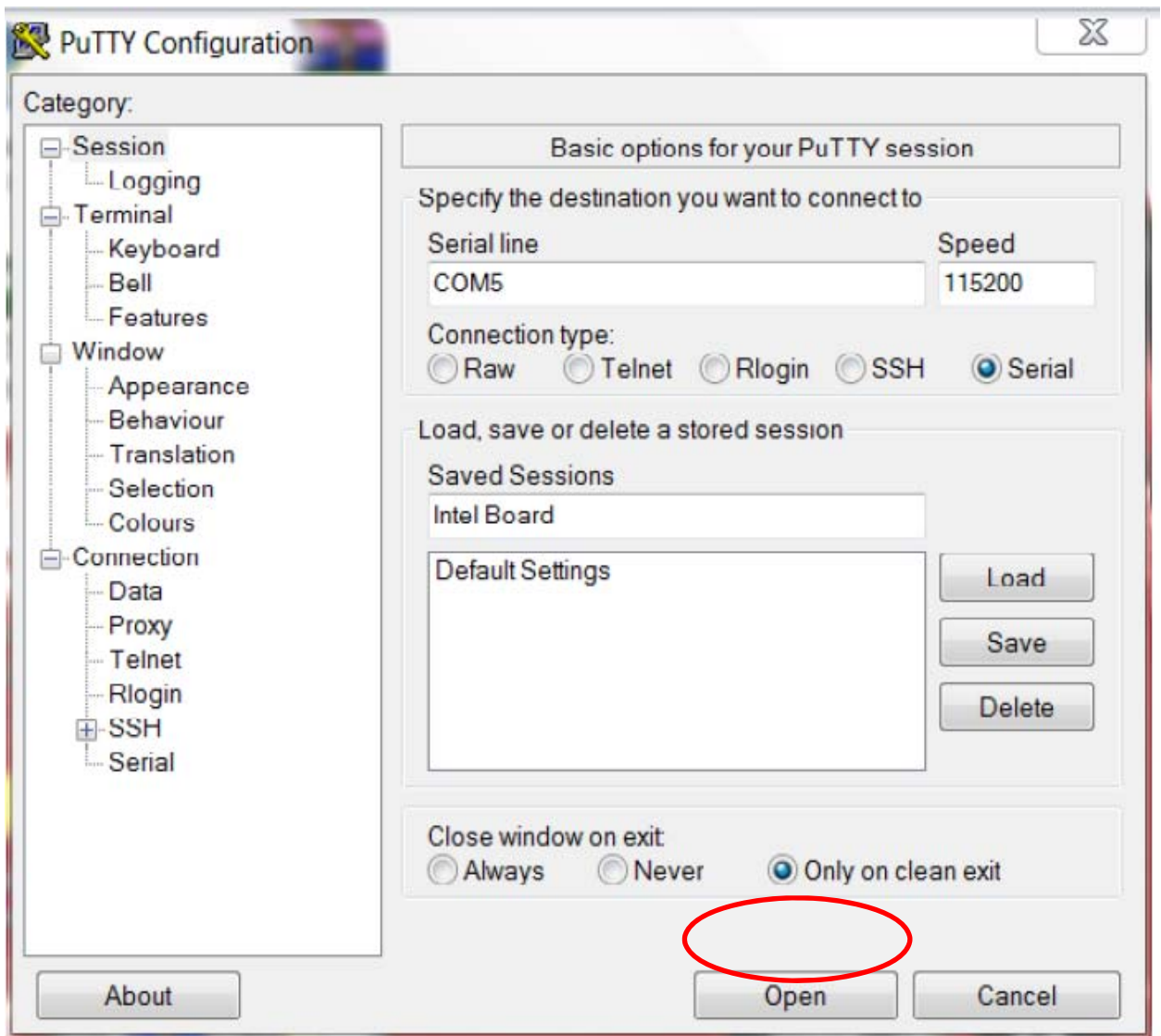
The link below allows you to download putty which is an application that allows you to connect via serial communication as well as many others.

Putty: <http://the.earth.li/~sgtatham/putty/latest/x86/putty.exe>

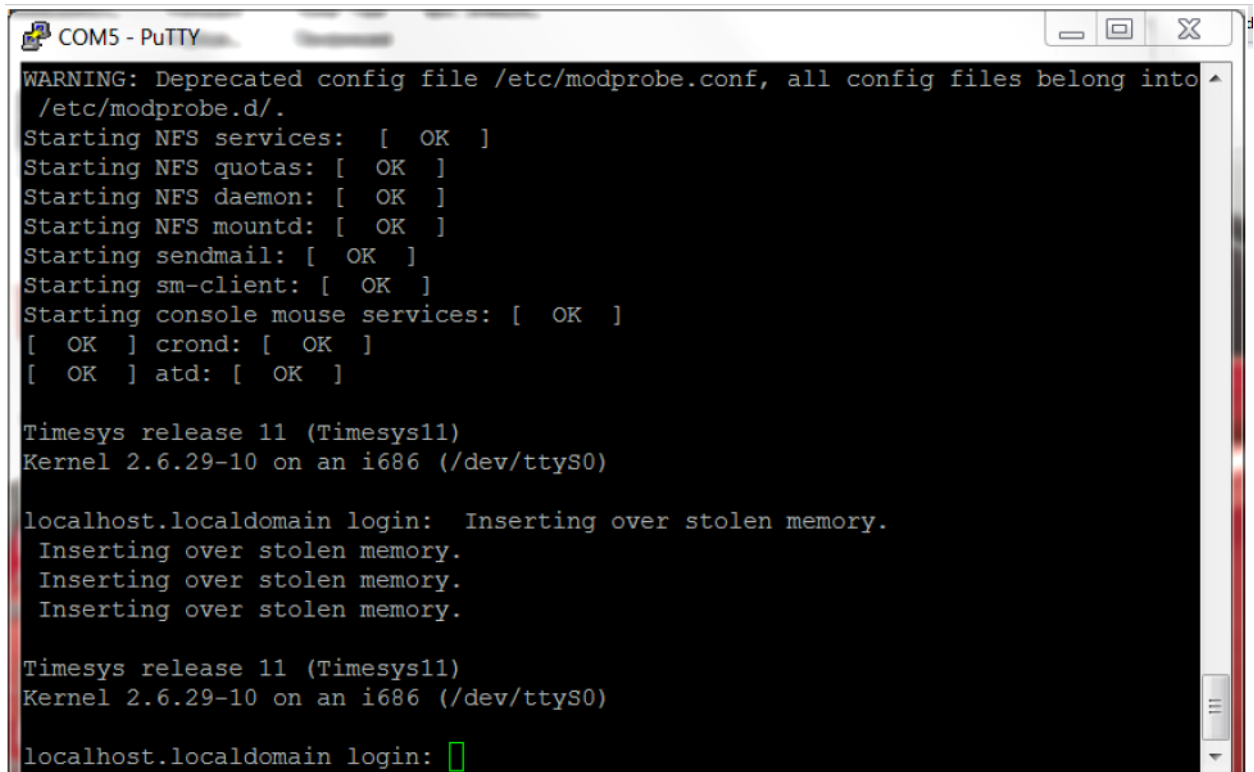
9. Now set the communication type to Serial, the COM port to your usb to serial cable COM port, and set the baud rate to 115200



10. Now click on the Open button on Putty, and it would open a Putty terminal, and it should be blank.



11. Now press the reset buttons (located next to the power button on the Intel board) then you will see the Atom Board starting all of the services. After about 3-4 minutes all the services would have loaded and you can press enter to make the active for input as show below.

A screenshot of a PuTTY terminal window titled "COM5 - PuTTY". The terminal displays the following text:

```
WARNING: Deprecated config file /etc/modprobe.conf, all config files belong into
/etc/modprobe.d/.
Starting NFS services: [ OK ]
Starting NFS quotas: [ OK ]
Starting NFS daemon: [ OK ]
Starting NFS mountd: [ OK ]
Starting sendmail: [ OK ]
Starting sm-client: [ OK ]
Starting console mouse services: [ OK ]
[ OK ] crond: [ OK ]
[ OK ] atd: [ OK ]

Timesys release 11 (Timesys11)
Kernel 2.6.29-10 on an i686 (/dev/ttyS0)

localhost.localdomain login: Inserting over stolen memory.
Inserting over stolen memory.
Inserting over stolen memory.
Inserting over stolen memory.

Timesys release 11 (Timesys11)
Kernel 2.6.29-10 on an i686 (/dev/ttyS0)

localhost.localdomain login: █
```

12. You can now login to the Atom Board with:
user: inforce
password: inforce123