

Connecting to Atom Board with Serial Port

There are multiple ways to connect to the Atom Board, but in this guide we would be connecting using the serial port on the Atom Board.

You would need a serial to serial cable or usb to serial cable in order to connect the Atom Board to a regular PC. In this guide I would be using a usb to serial cable.

First install the drivers for the serial cable on your PC. This is automatic most of the time with the latest usb to serial cables as shown below.

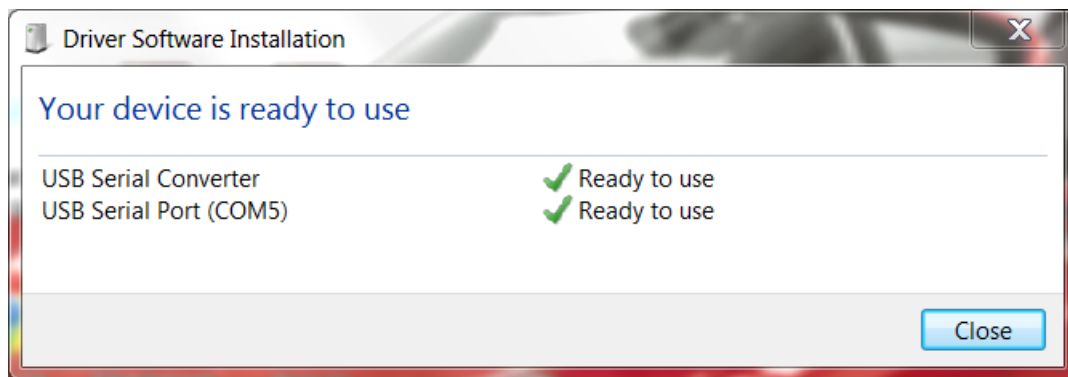


Figure 1

Then you would need to confirm the COM port that the cable is using on your PC. So click on start ---> right click My Computer ---> Click on Properties as shown below.



Figure 2

The properties window should pop up. Then you would need to click on the Device Manager link on the left on the window as shown below.

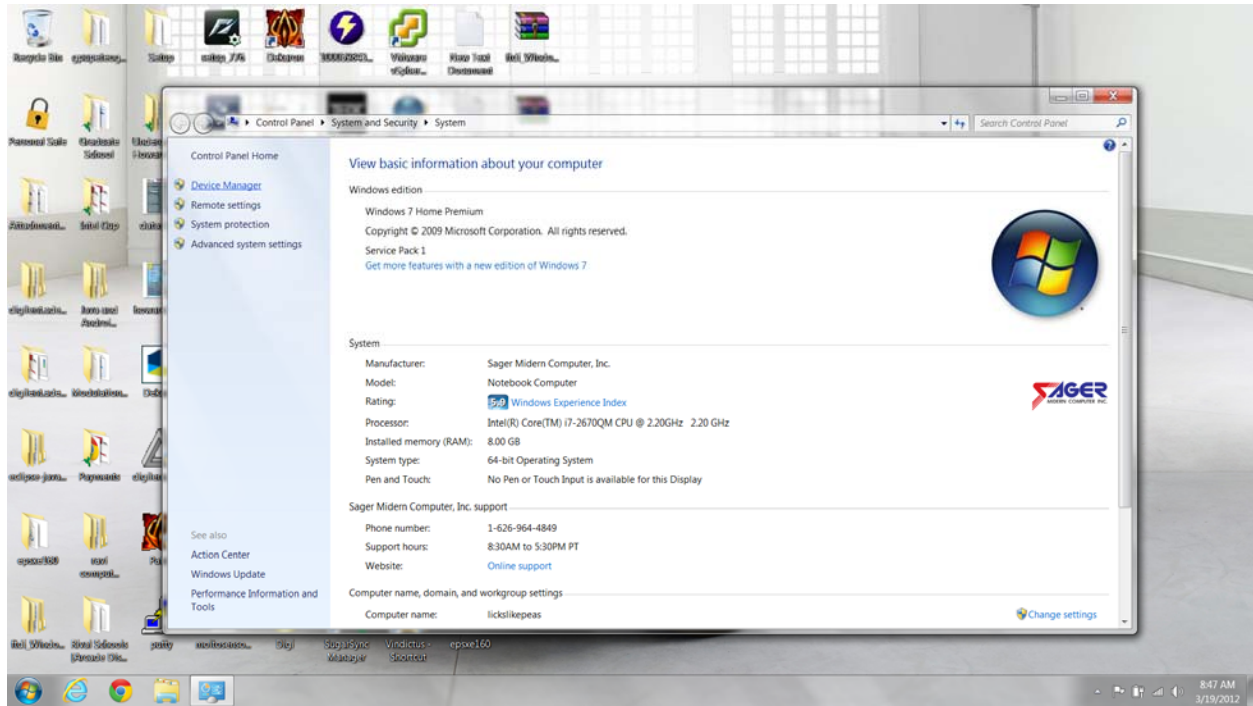


Figure 3

So now the Device Manager window should pop up. Now drop down the COM port list and you would see the actual COM port your cable is using as shown below.

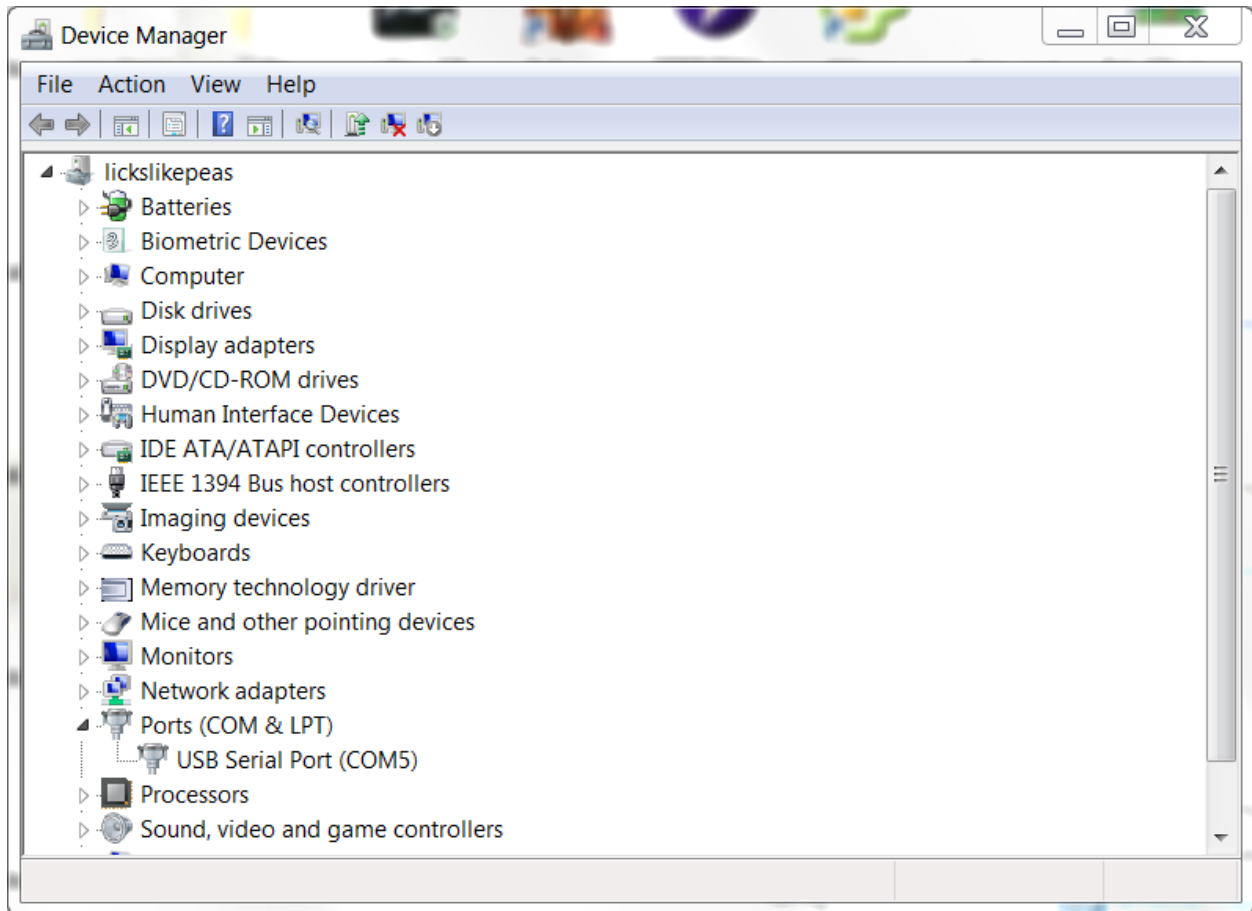


Figure 4

Now you would need a serial communication application to communicate with the Atom Board. In this guide I would be using Putty.

The link below allows you to download putty which is an application that allows you to connect via serial communication as well as many others.

Putty: <http://the.earth.li/~sgtatham/putty/latest/x86/putty.exe>

Now set the communication type to Serial, the COM port to your usb to serial cable COM port, and set the baud rate to 115200.

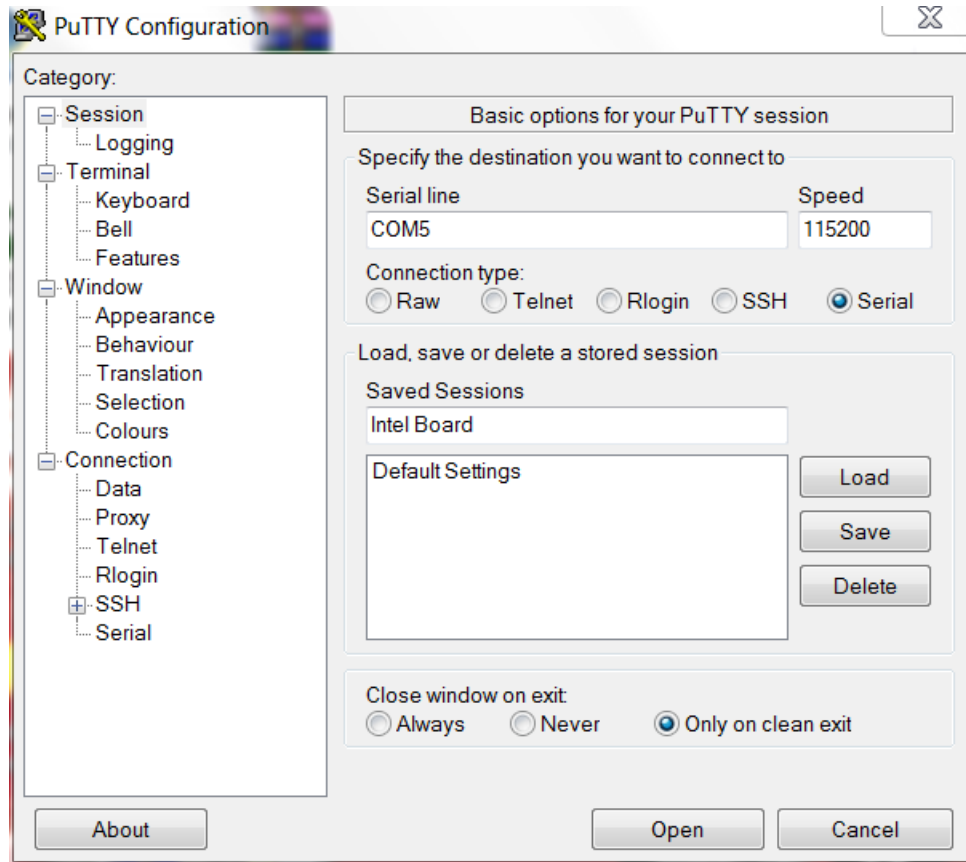


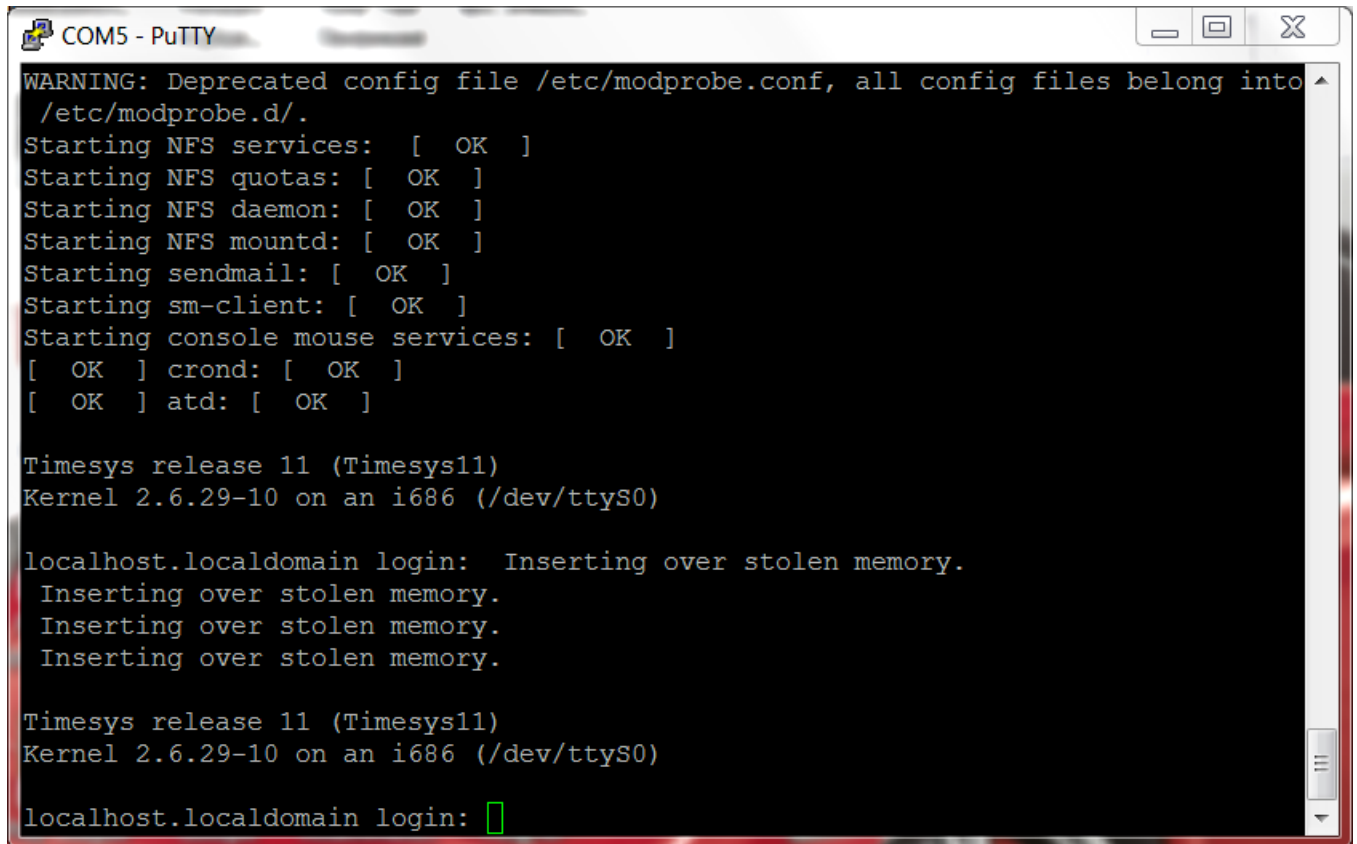
Figure 5

Now connect the serial cable to the Atom Board. Please ensure that the board is turned off.

At this point your cable is connected to your PC and Atom Board, and the settings are placed in the Putty application.

Now click on the Open button on Putty, and it would open a Putty terminal, and it should be blank.

Now turn on your Atom Board at the you would see the Atom Board starting all of the services. After about 3-4 minutes all the services would have loaded and you can press enter to make the active for input as show below.



```
COM5 - PuTTY
WARNING: Deprecated config file /etc/modprobe.conf, all config files belong into
/etc/modprobe.d/.
Starting NFS services: [ OK ]
Starting NFS quotas: [ OK ]
Starting NFS daemon: [ OK ]
Starting NFS mountd: [ OK ]
Starting sendmail: [ OK ]
Starting sm-client: [ OK ]
Starting console mouse services: [ OK ]
[ OK ] crond: [ OK ]
[ OK ] atd: [ OK ]

Timesys release 11 (Timesys11)
Kernel 2.6.29-10 on an i686 (/dev/ttyS0)

localhost.localdomain login: Inserting over stolen memory.
Inserting over stolen memory.
Inserting over stolen memory.
Inserting over stolen memory.

Timesys release 11 (Timesys11)
Kernel 2.6.29-10 on an i686 (/dev/ttyS0)

localhost.localdomain login: █
```

Figure 6

You can now login to the Atom Board with:

user: inforce

password: inforce123

Enjoy!!!