

HP Tablet PC

HP Compaq tc4200



Tutorial for Engineering Class/Lab Use

Dr. Charles Kim

Department of Electrical and Computer Engineering

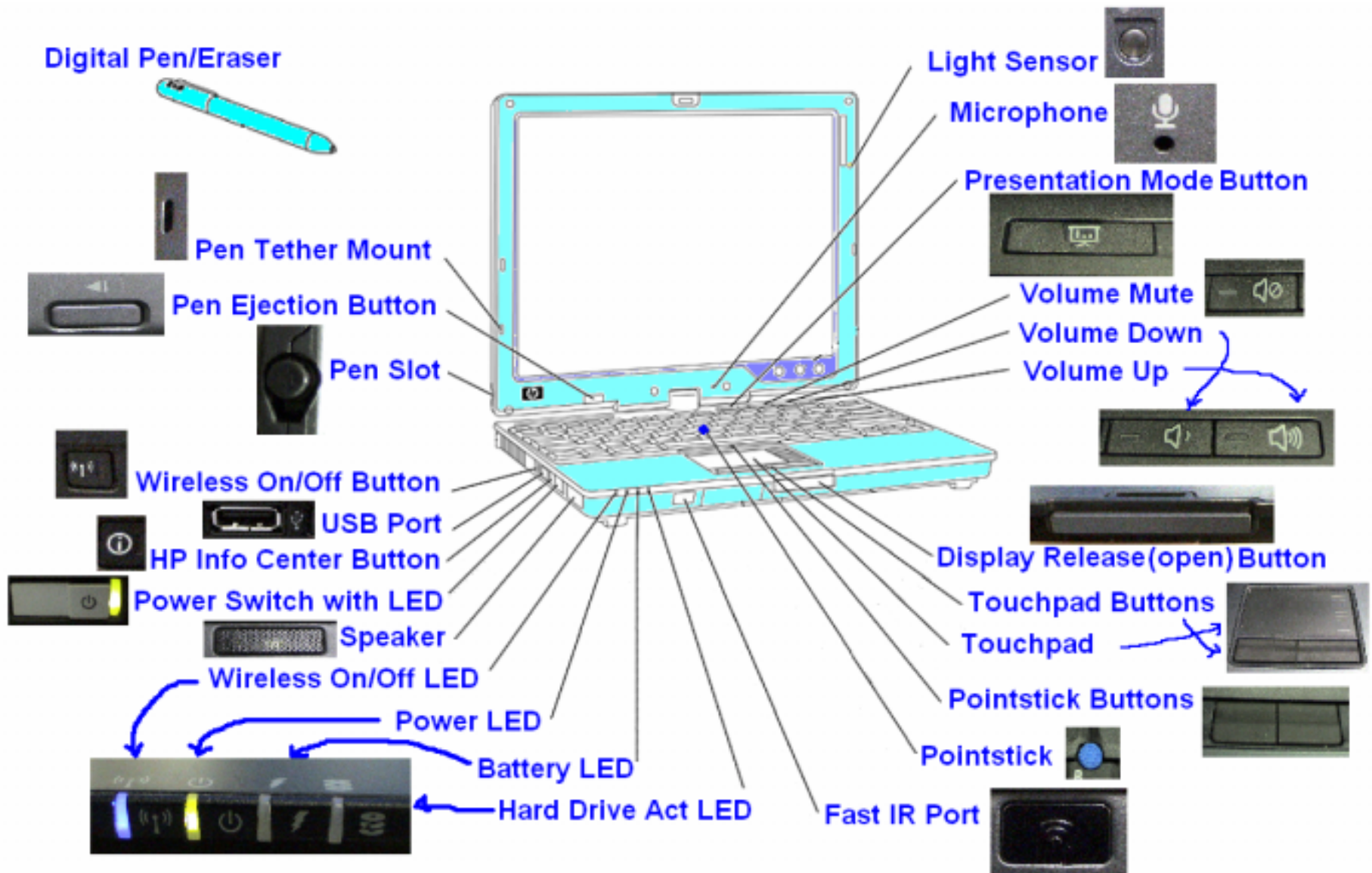
Howard University

WWW.MWFTR.COM

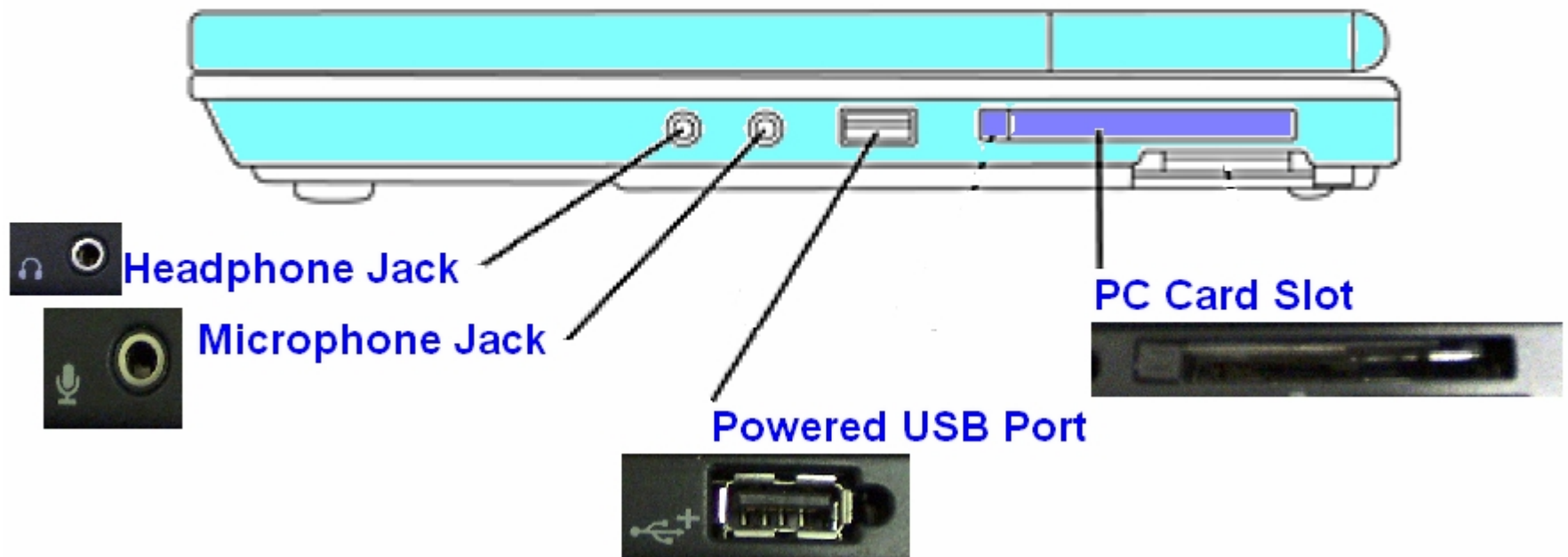
Quick Spec

- Windows XP Tablet PC Edition 2005
- Intel® Pentium® M processors 730 to 770* or Intel Celeron® M processor 370*
- 12.1-inch XGA Wide Viewing Angle Display
- Mobile Intel 915GM Express Chipset
- 256-MB DDR2 SDRAM
- Up to 80-GB 5400 rpm, user-removable hard drive
- Optional integrated Bluetooth
- Dual pointing devices (Touchpad with Scroll Zone and Pointstick)
- Docking Station for CD/DVD
- Pressure sensitive digital eraser pen with tether and clip

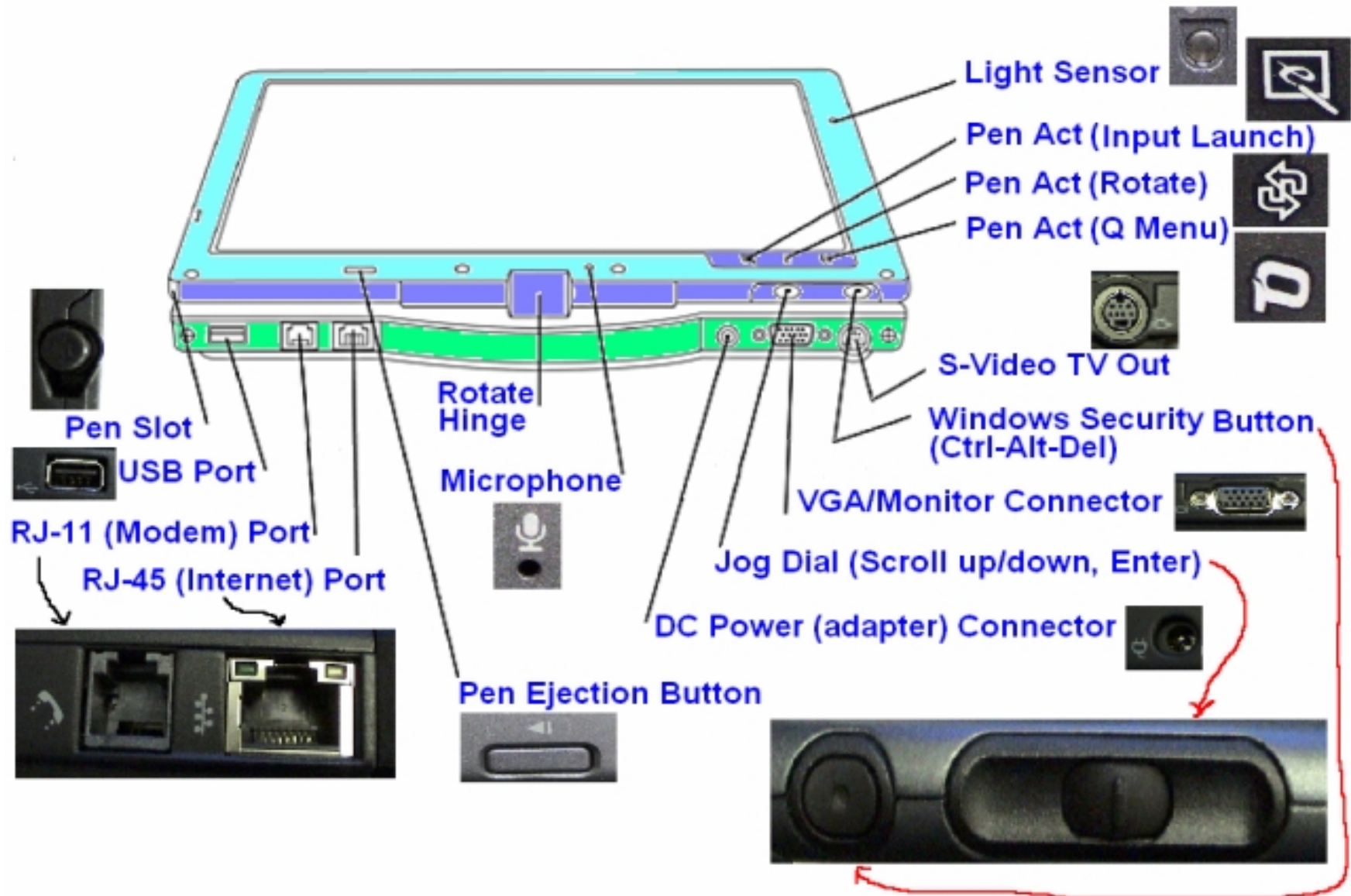
Overview



Rightview

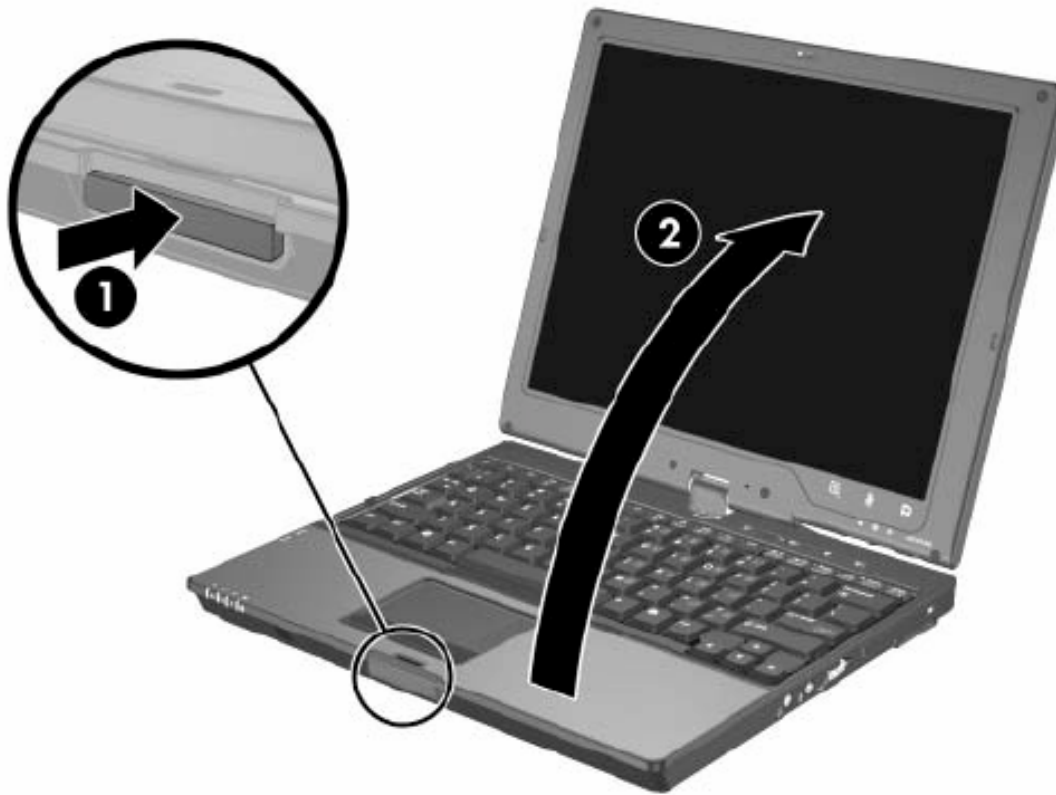


Backview (Tablet Mode)



Getting Started

Opening the Tablet PC



1. Press the Display Release Button
2. Raise the Display

- “Getting Started” is based on *Getting Started HP Compaq Tablet PC Series*. Document Number 367427-001, HP. March 2005

Getting Started

Rotating the Display for Tablet Mode

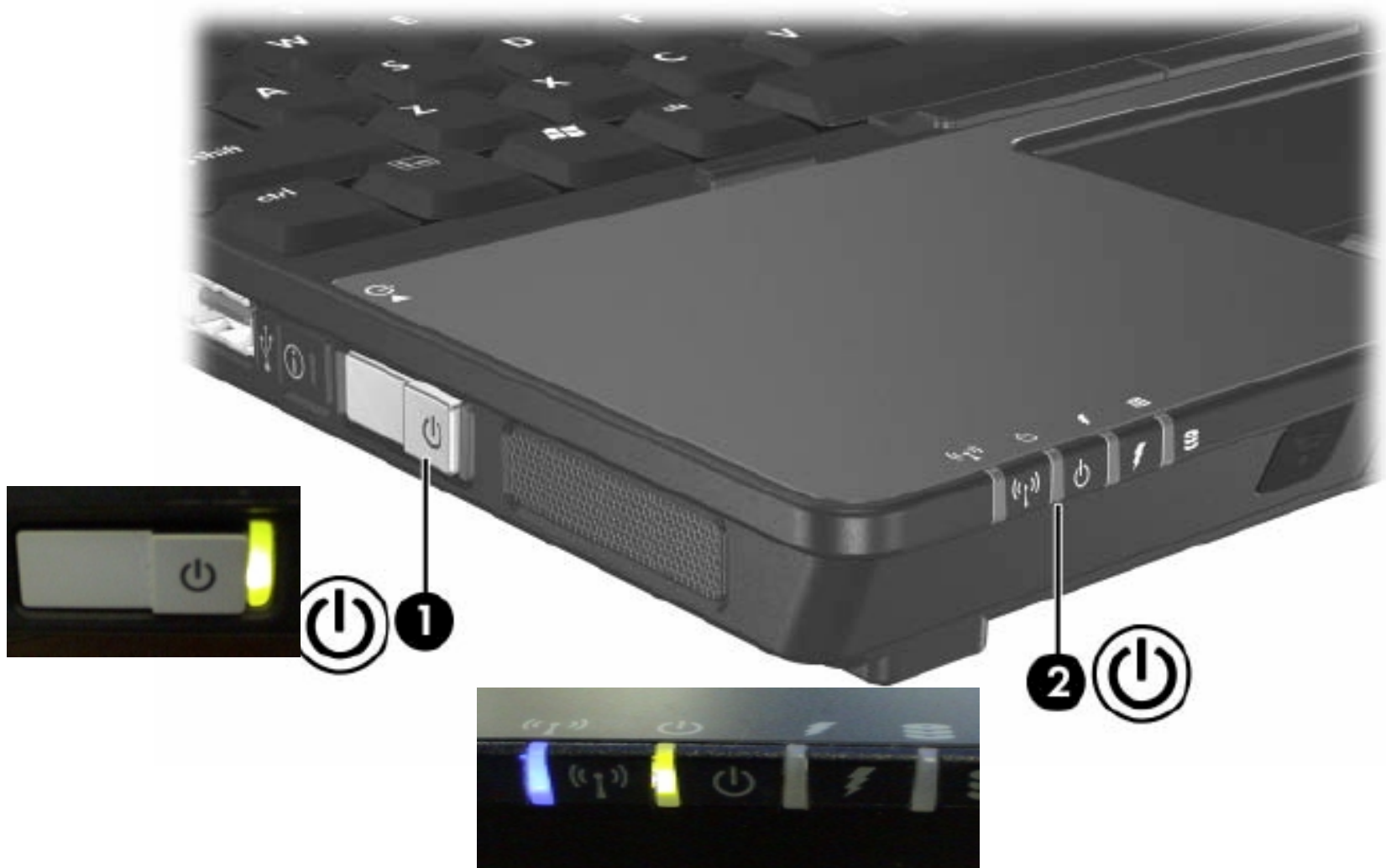
1. Rotate the display clockwise until it snaps into place facing away from the keyboard.
2. Tilt the display downward onto the keyboard until it snaps into place.



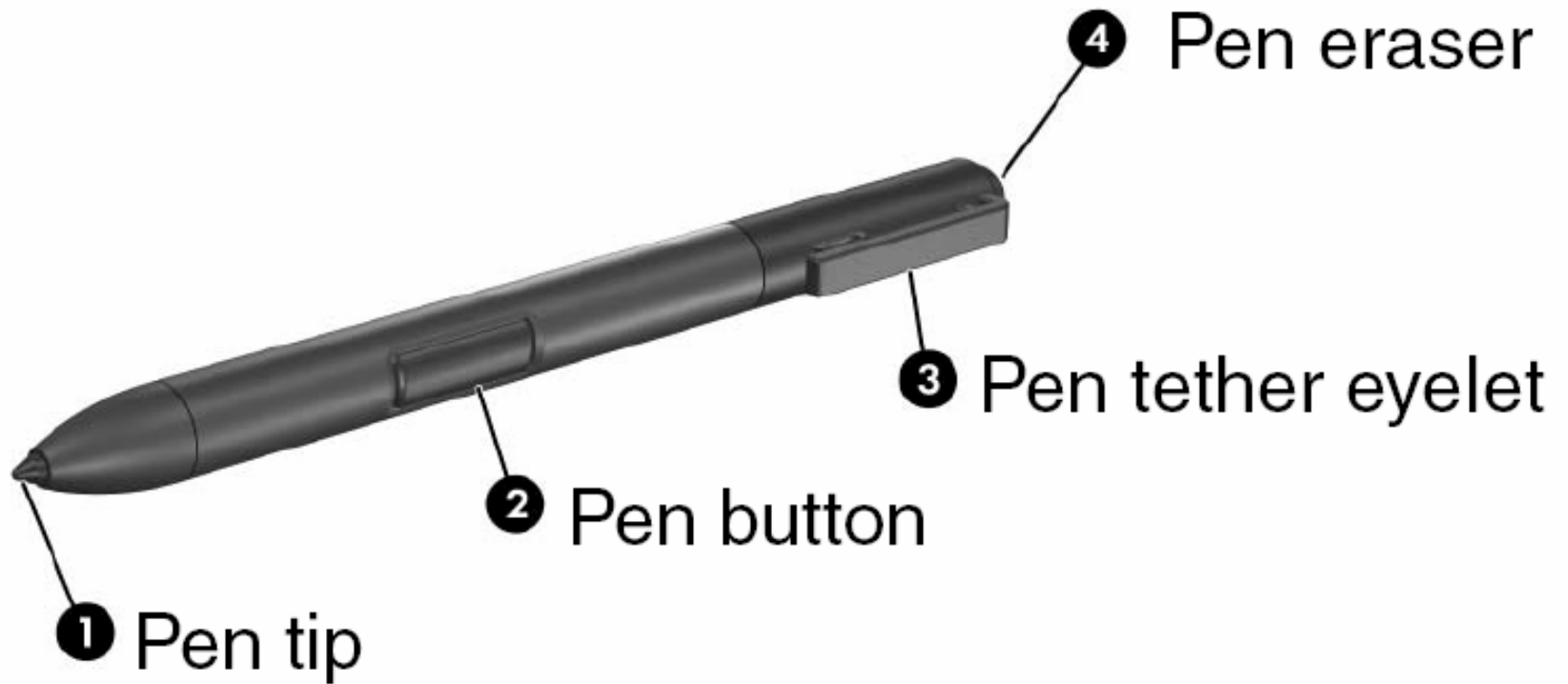
Getting Started

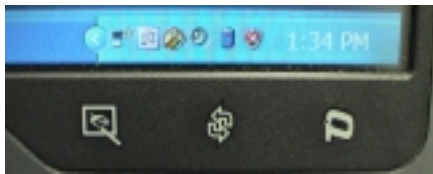
Turn on the Tablet PC

Slide the power switch 1 toward the front of the tablet PC. The power/standby light 2 is turned on.



Pen

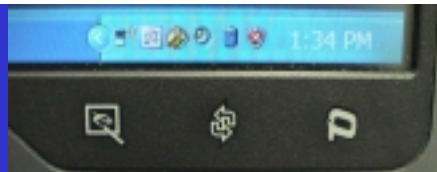




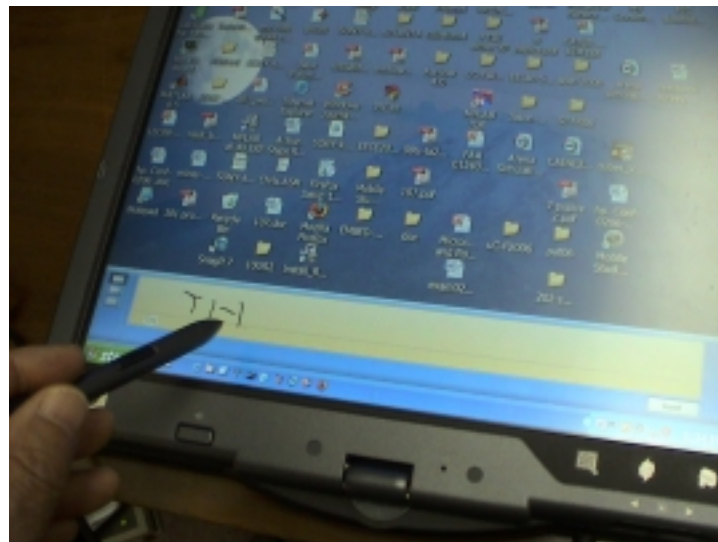
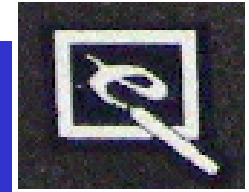
Pen Action

Tap the Rotate using Pen

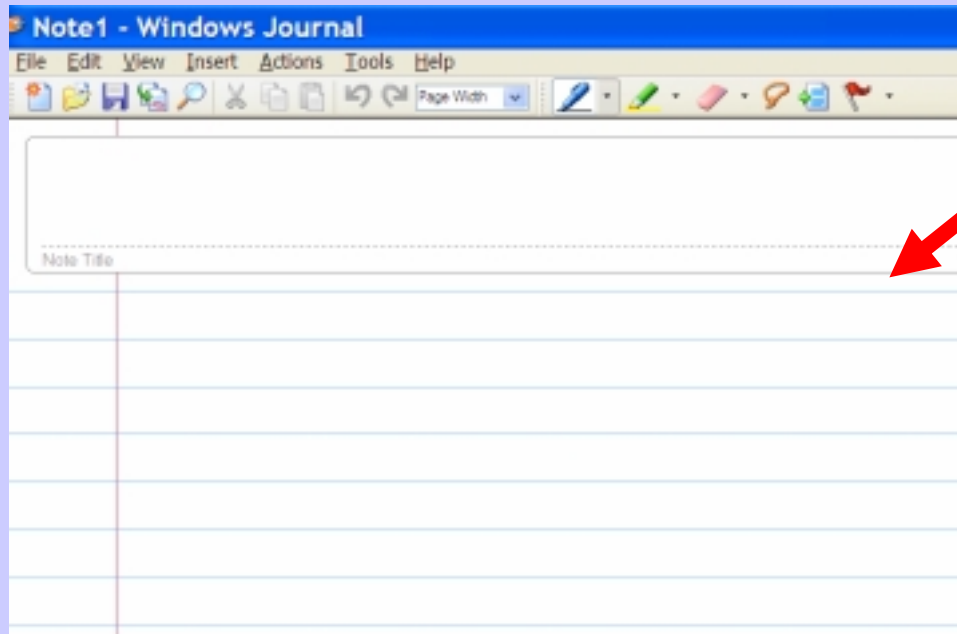
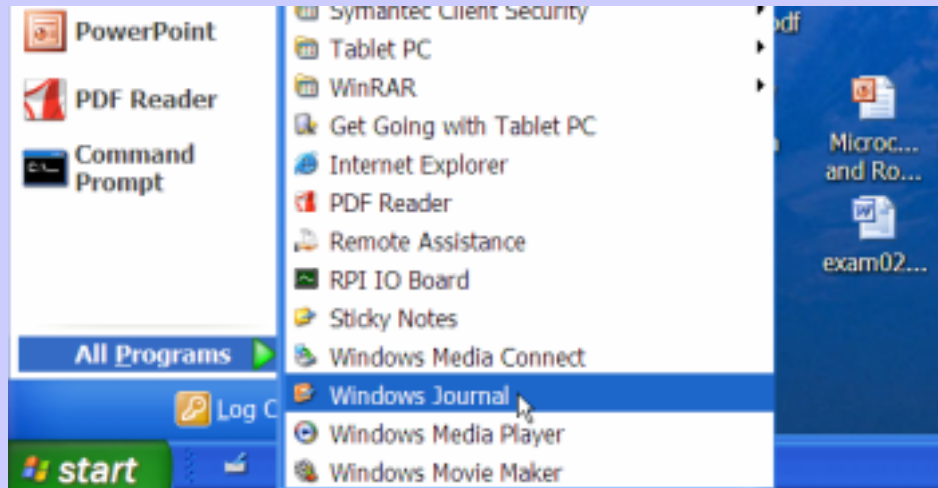




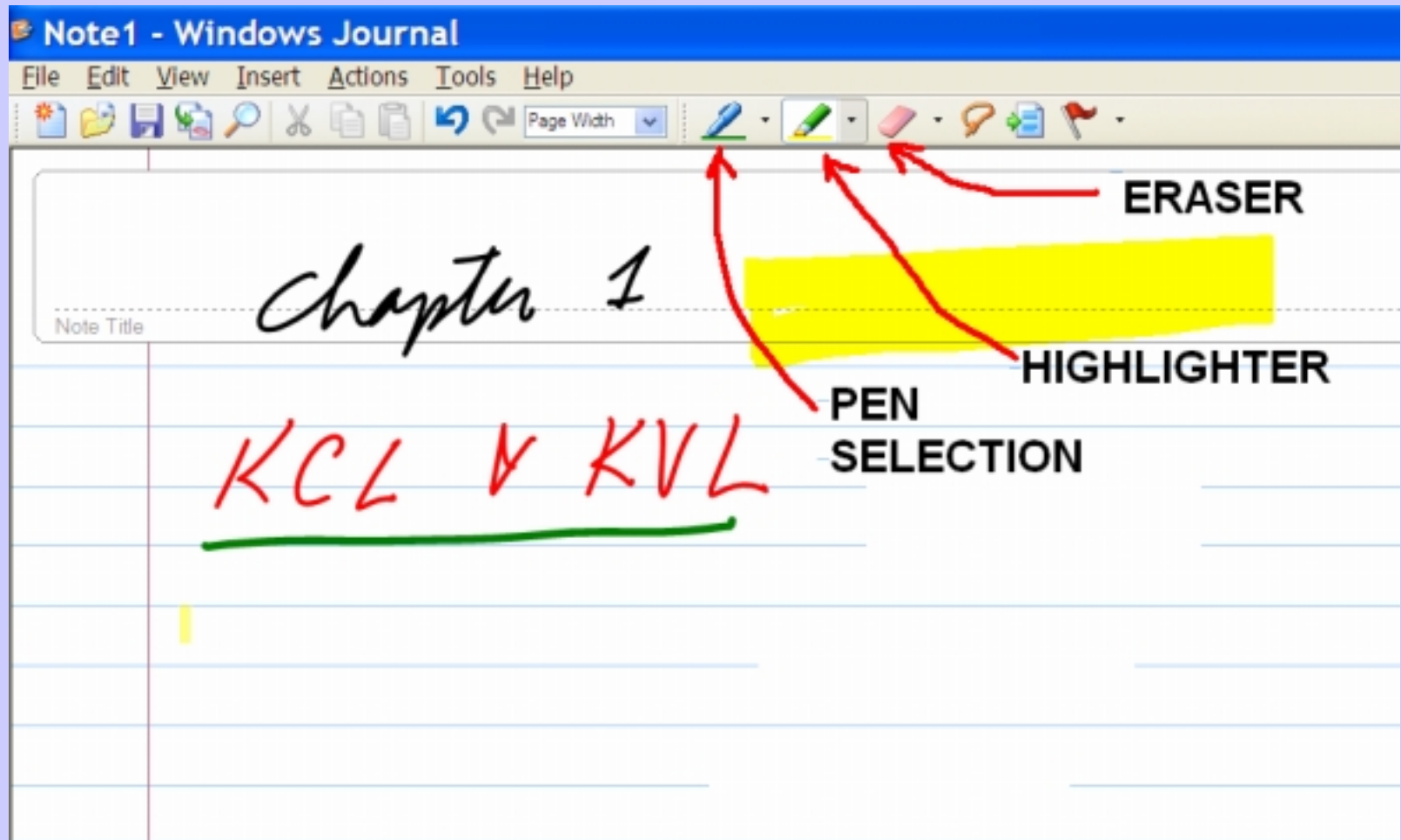
Pen Action Tablet Input Launch



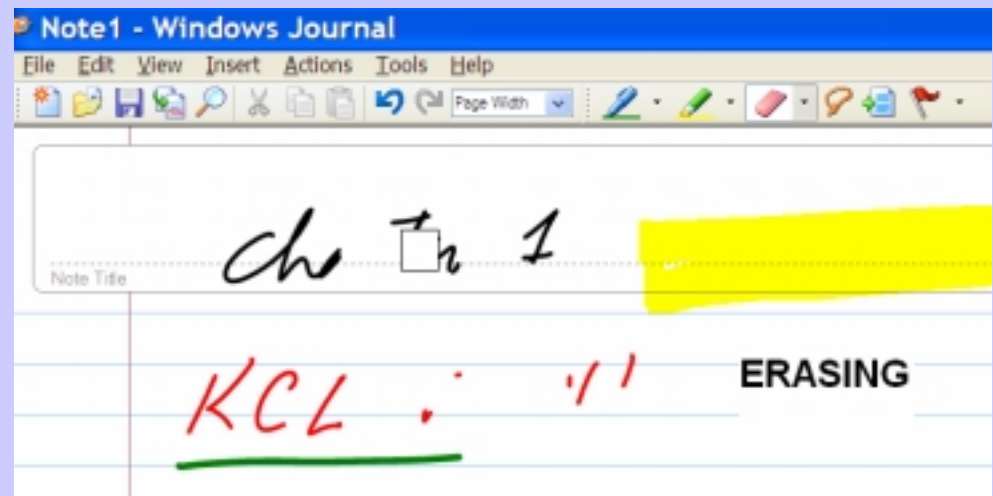
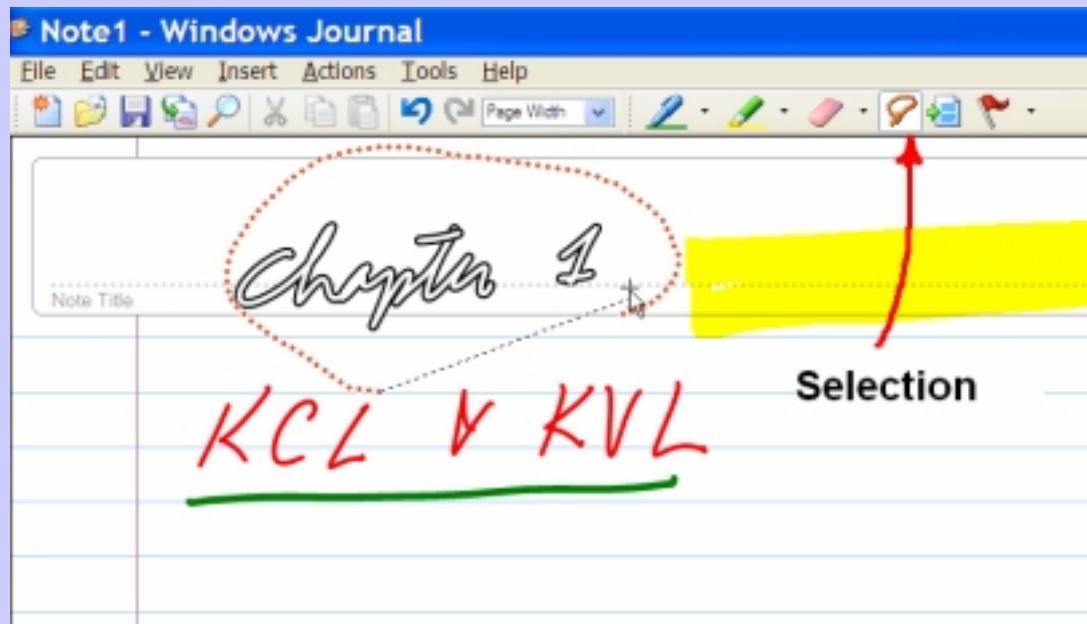
Windows Journal 1



Windows Journal 2

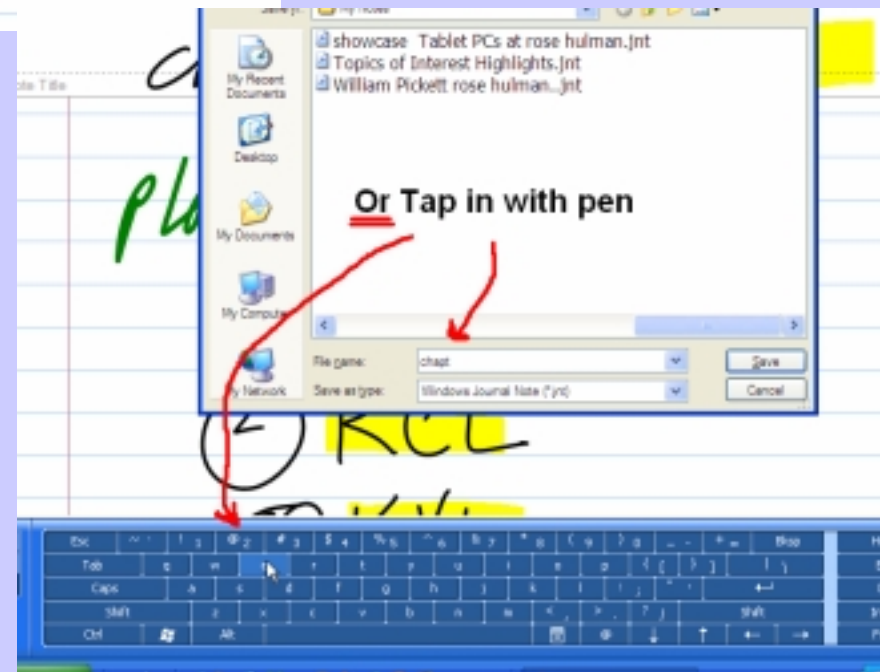
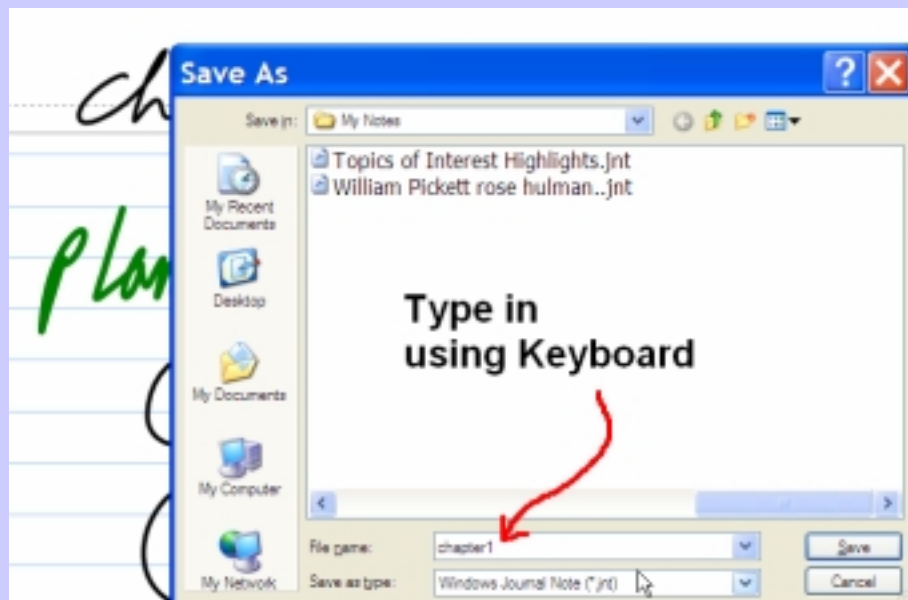
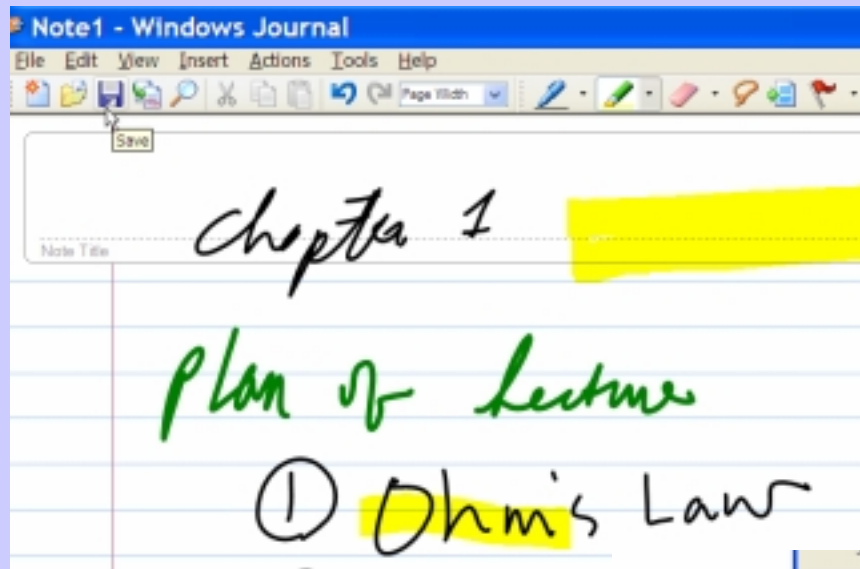


Windows Journal 3



Windows Journal 4

- **Save**



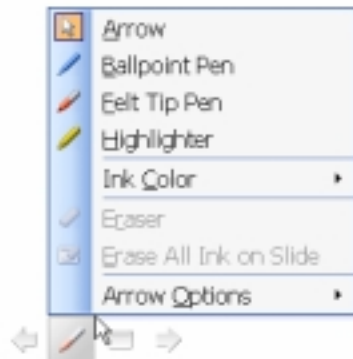
Power Point with Pen Annotation 1

- Tap for Pen menu

EECE416 Microcomputer Fundamentals

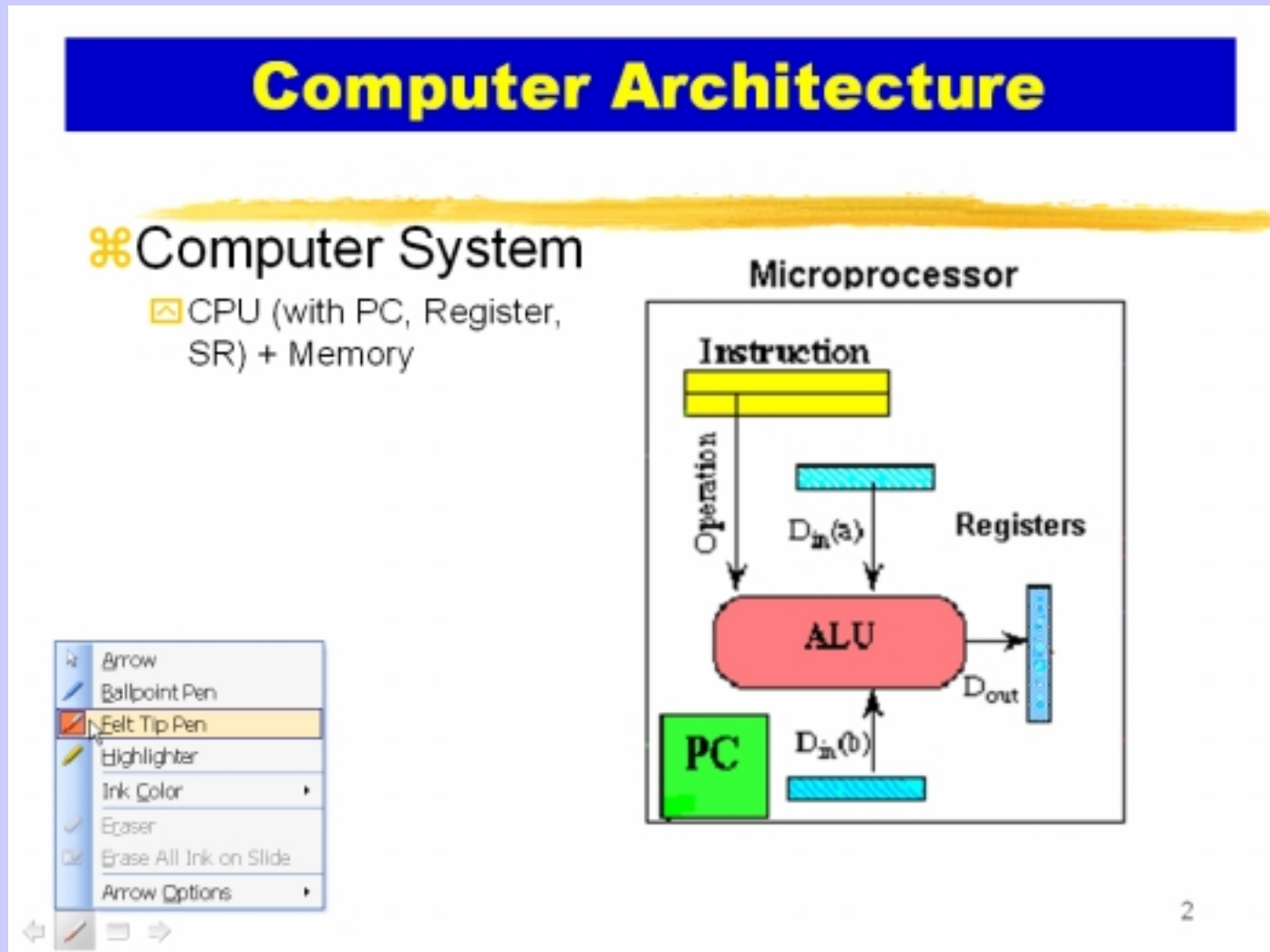
Microprocessor Architecture

Dr. Charles Kim
Howard University



Power Point with Pen Annotation 2

- Select Pen Type/Color



Power Point with Pen Annotation 3

- Write on it

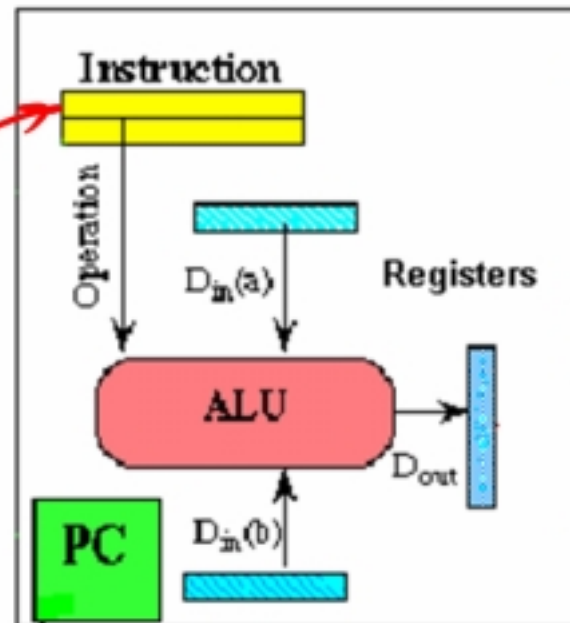
Computer Architecture

⌘ Computer System

☑ CPU (with PC, Register, SR) + Memory

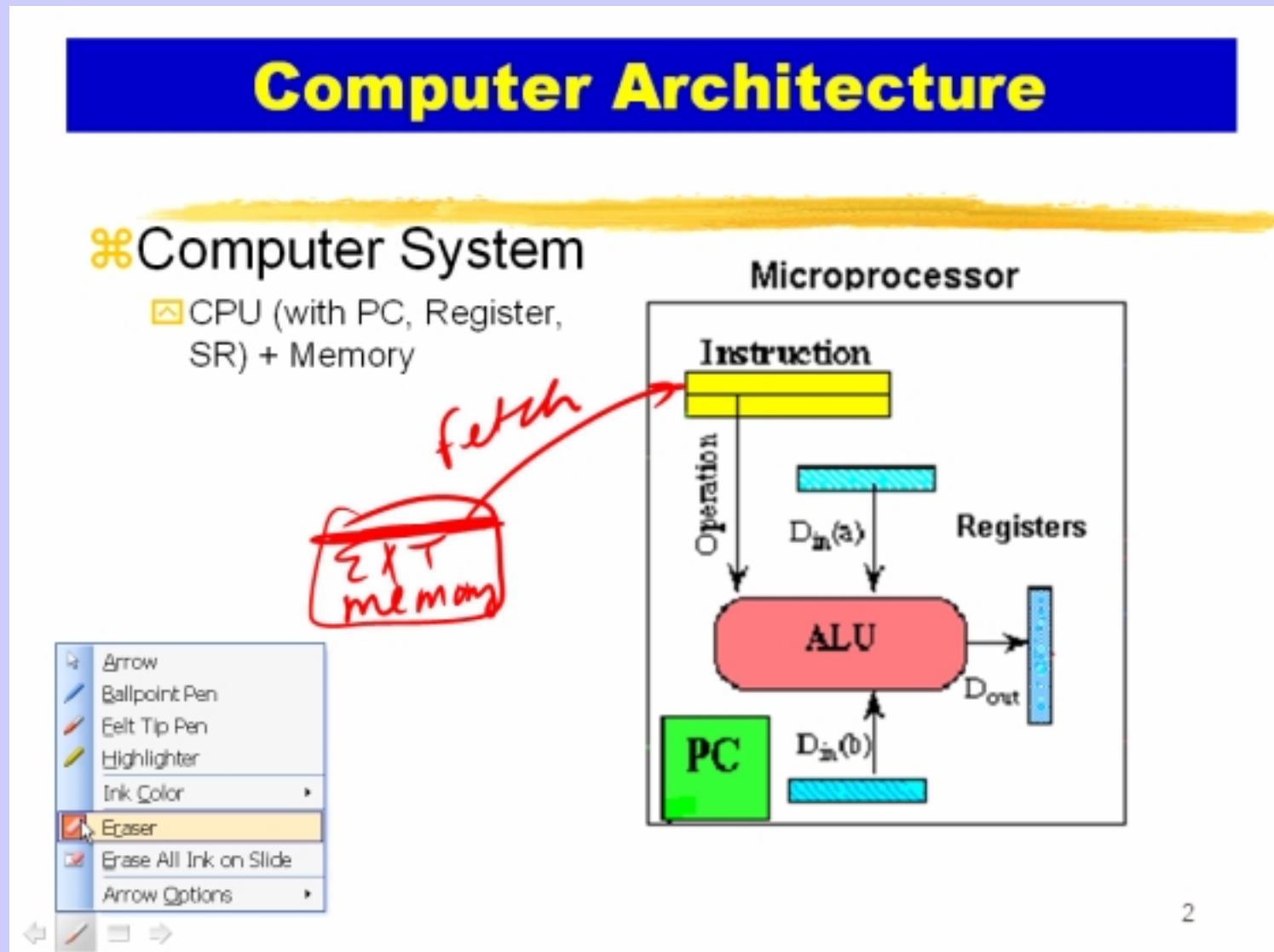


Microprocessor



Power Point with Pen Annotation 4

- Select Eraser



Power Point with Pen Annotation 5

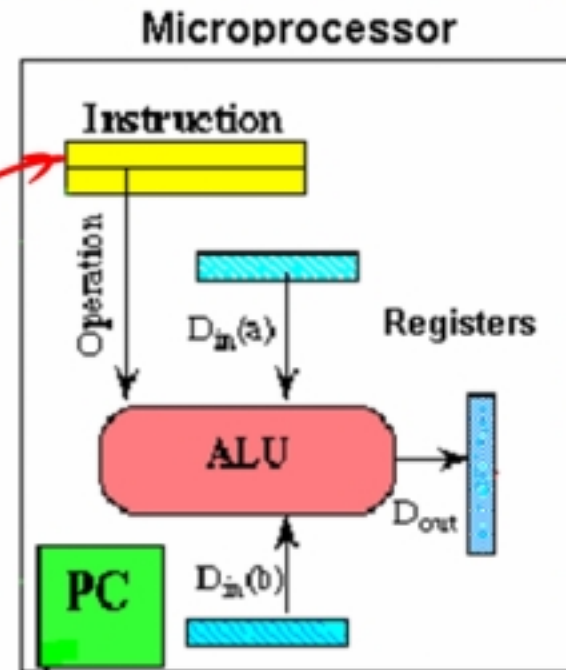
- Erase

Computer Architecture

⌘ Computer System

☑ CPU (with PC, Register, SR) + Memory

fetch
Σ memory



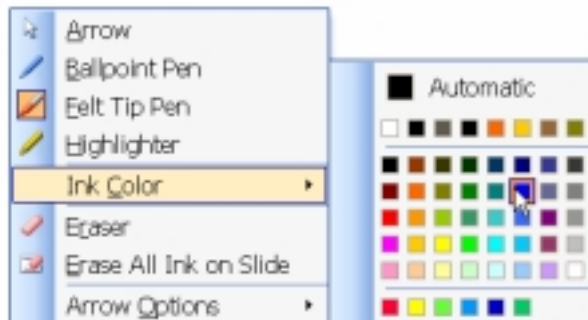
Power Point with Pen Annotation 6

- Choosing ink color

Computer Architecture

⌘ Computer System

☑ CPU (with PC, Register, SR) + Memory



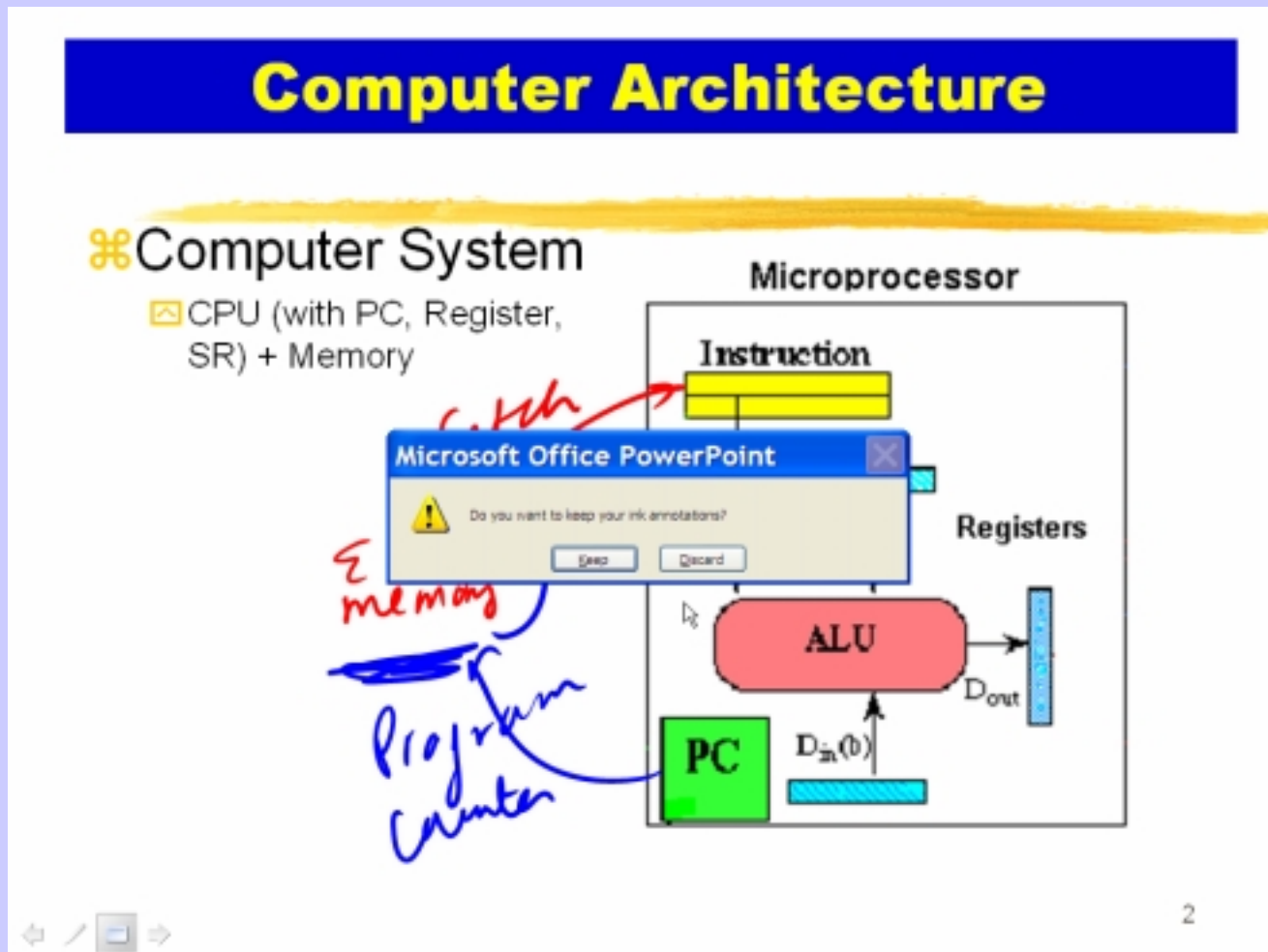
fetch

Σ memory



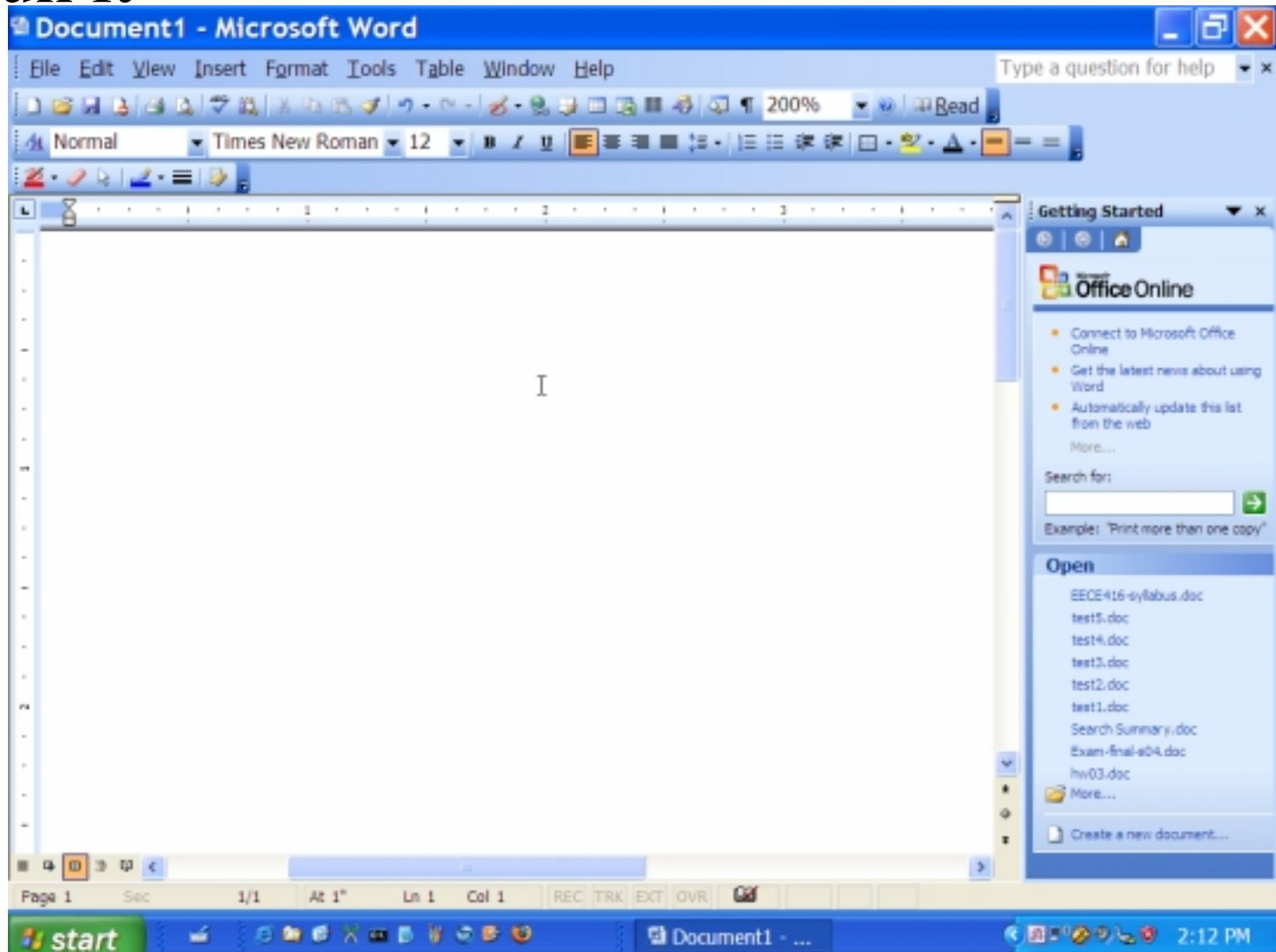
Power Point with Pen Annotation 7

- At the end of the show, save or not the ink annotation

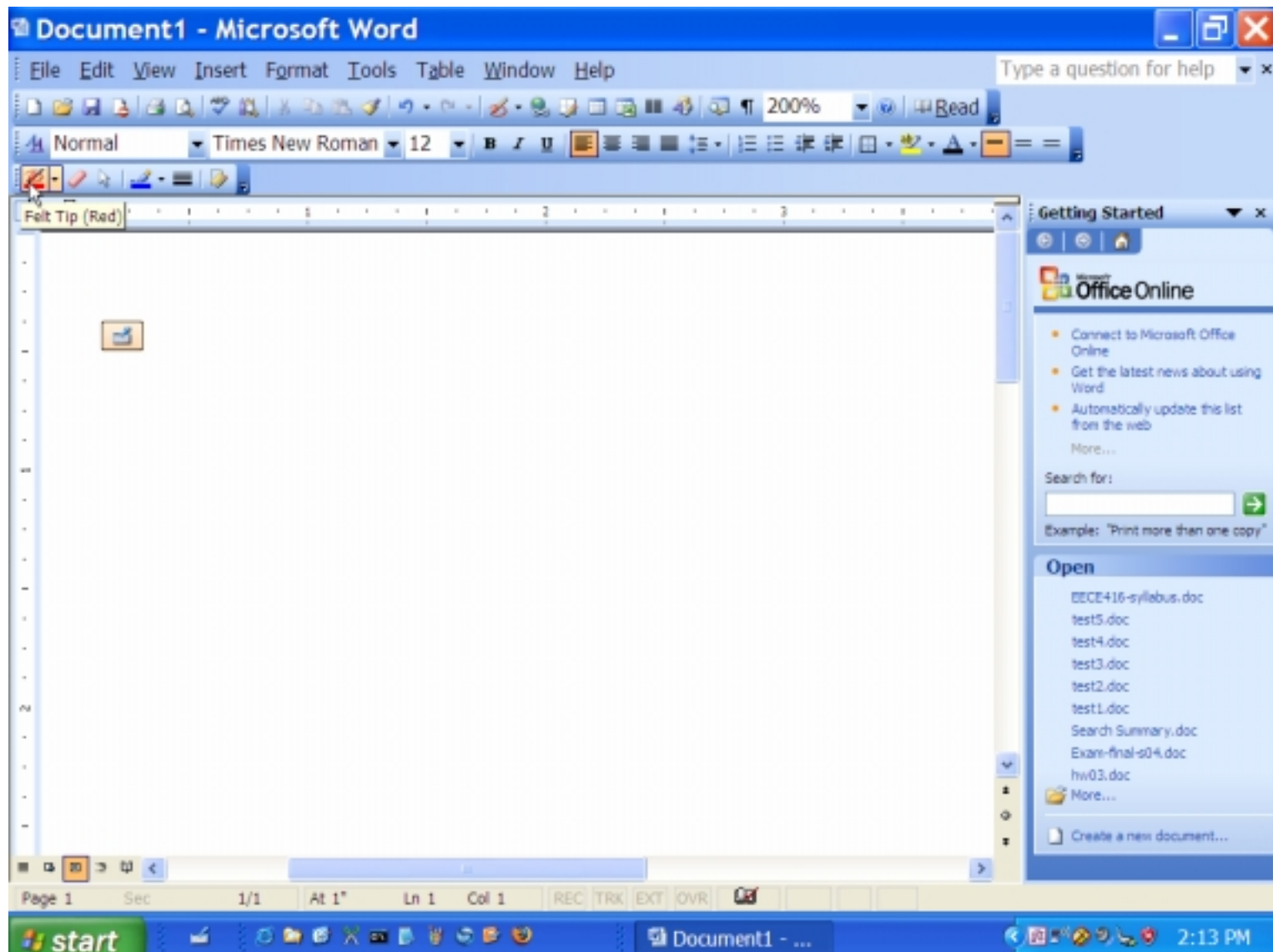


Microsoft Word with Pen

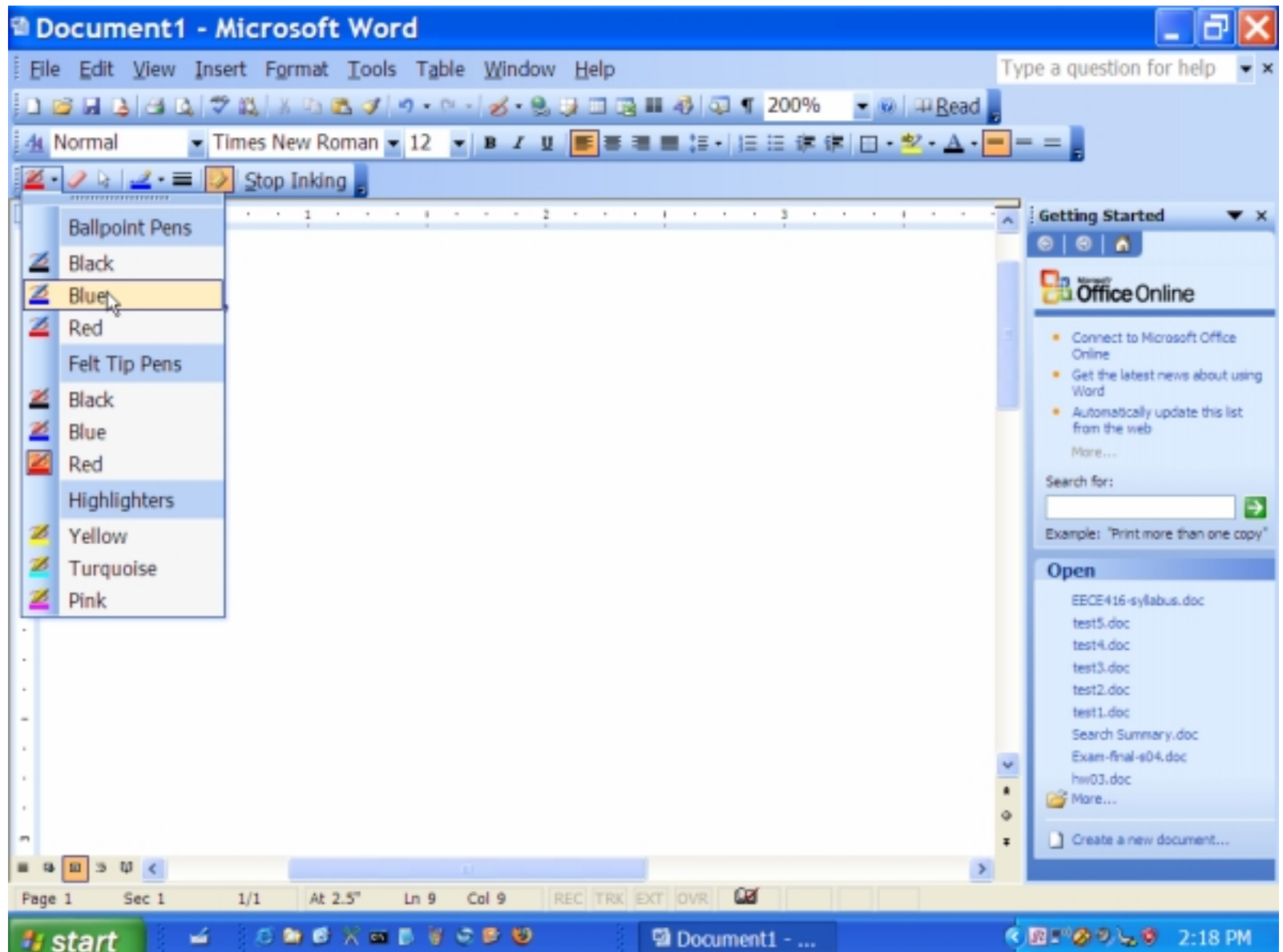
- Run it



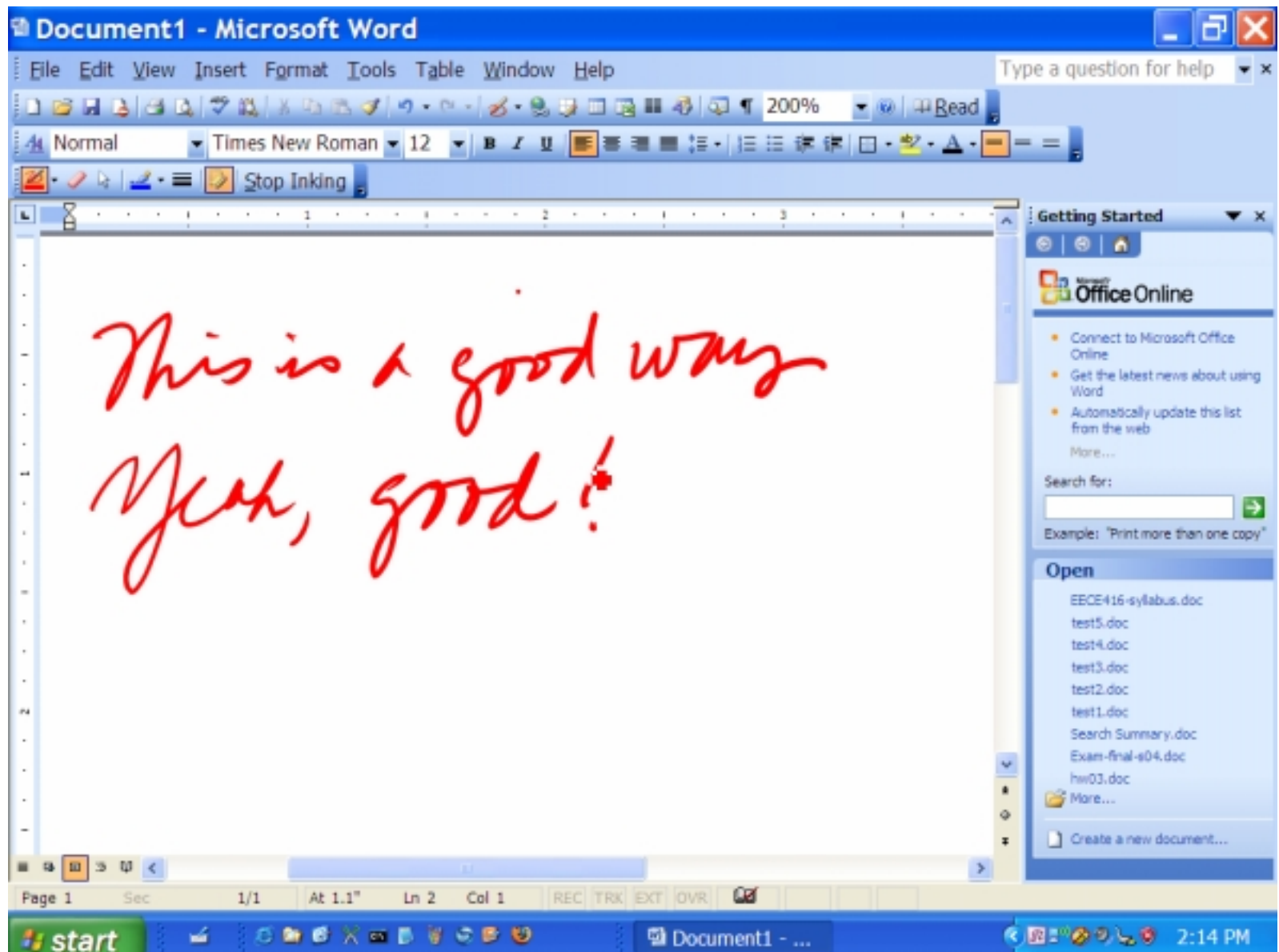
MS Word



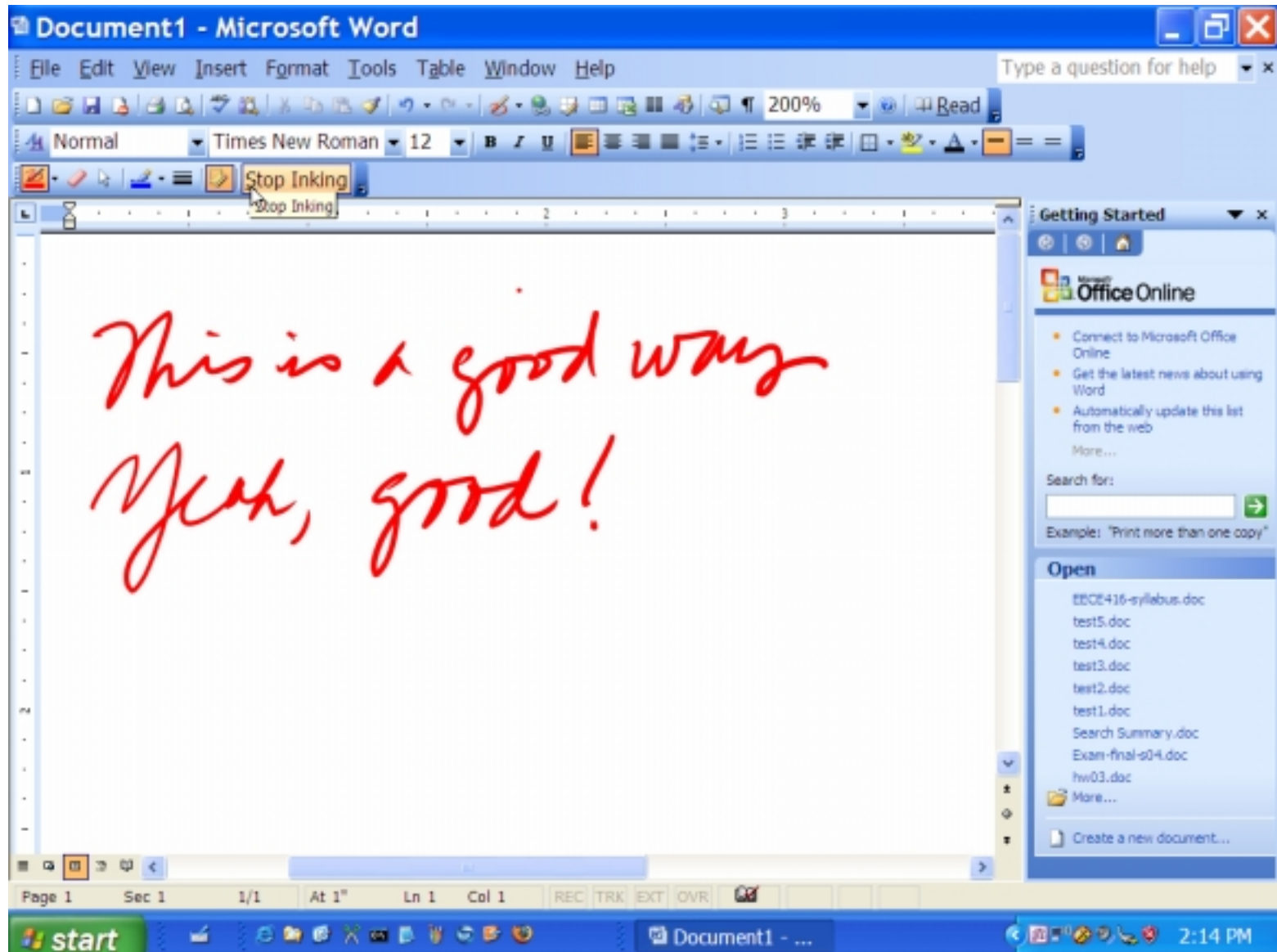
MS Word



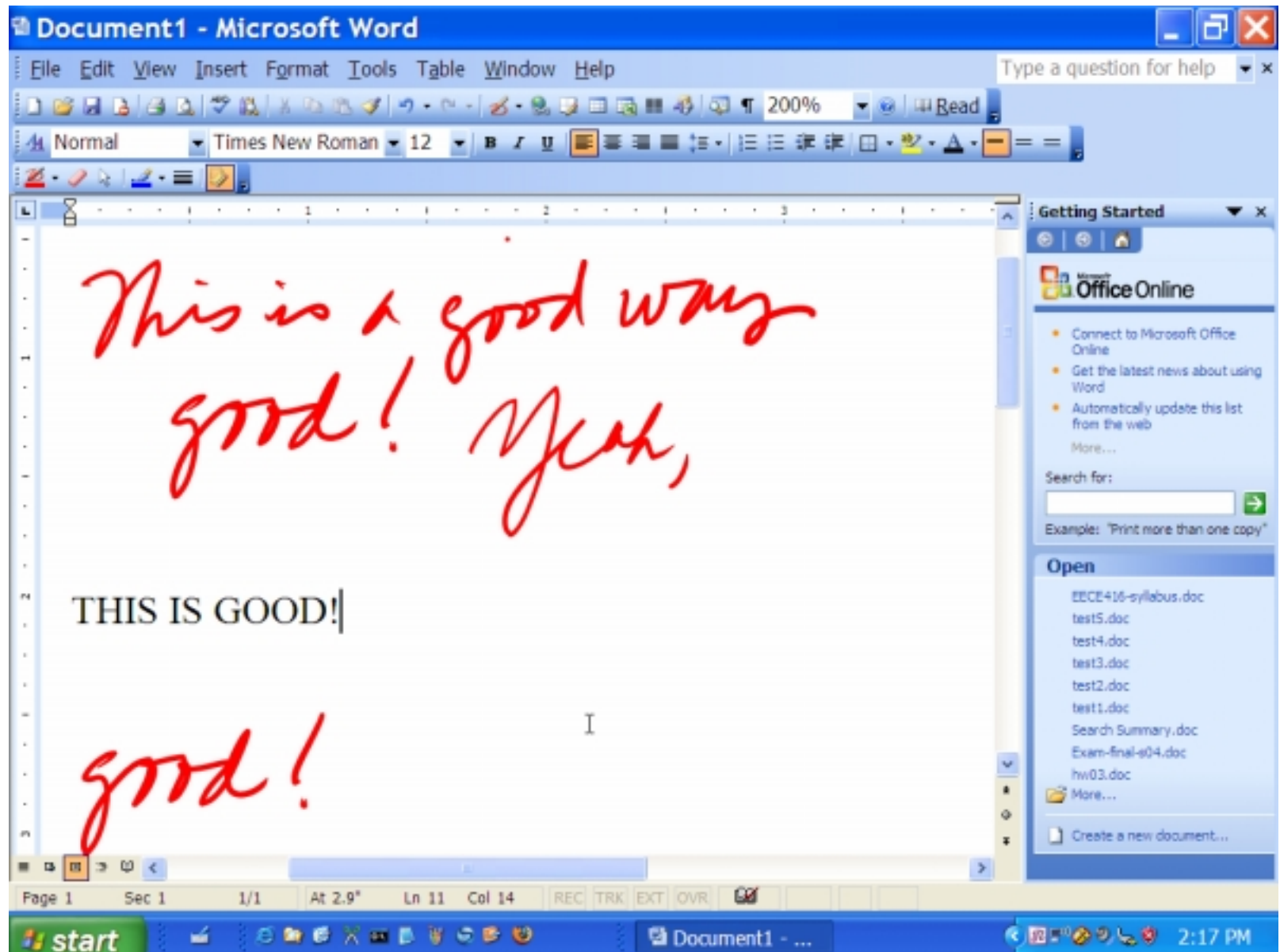
MS Word



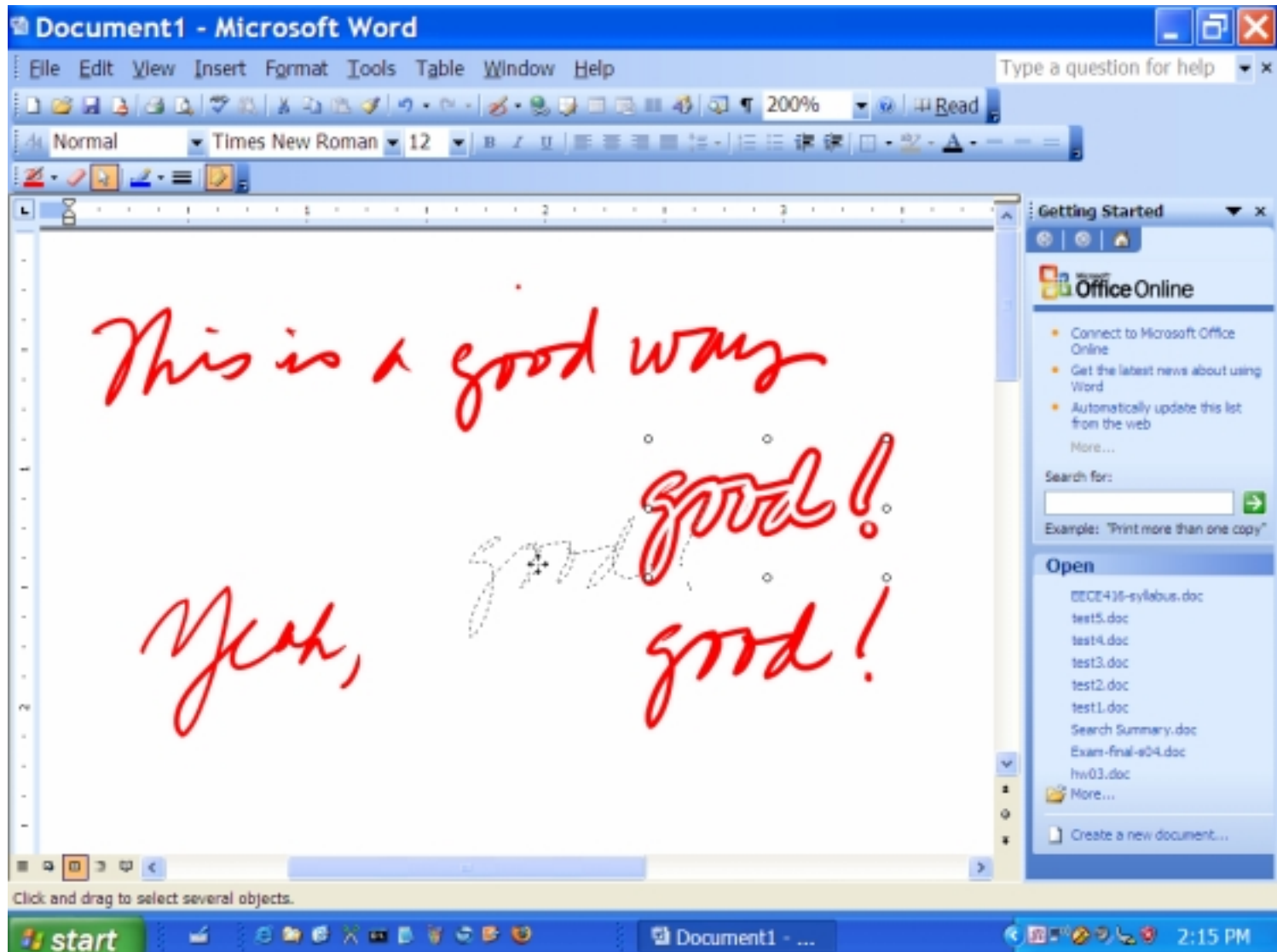
MS Word



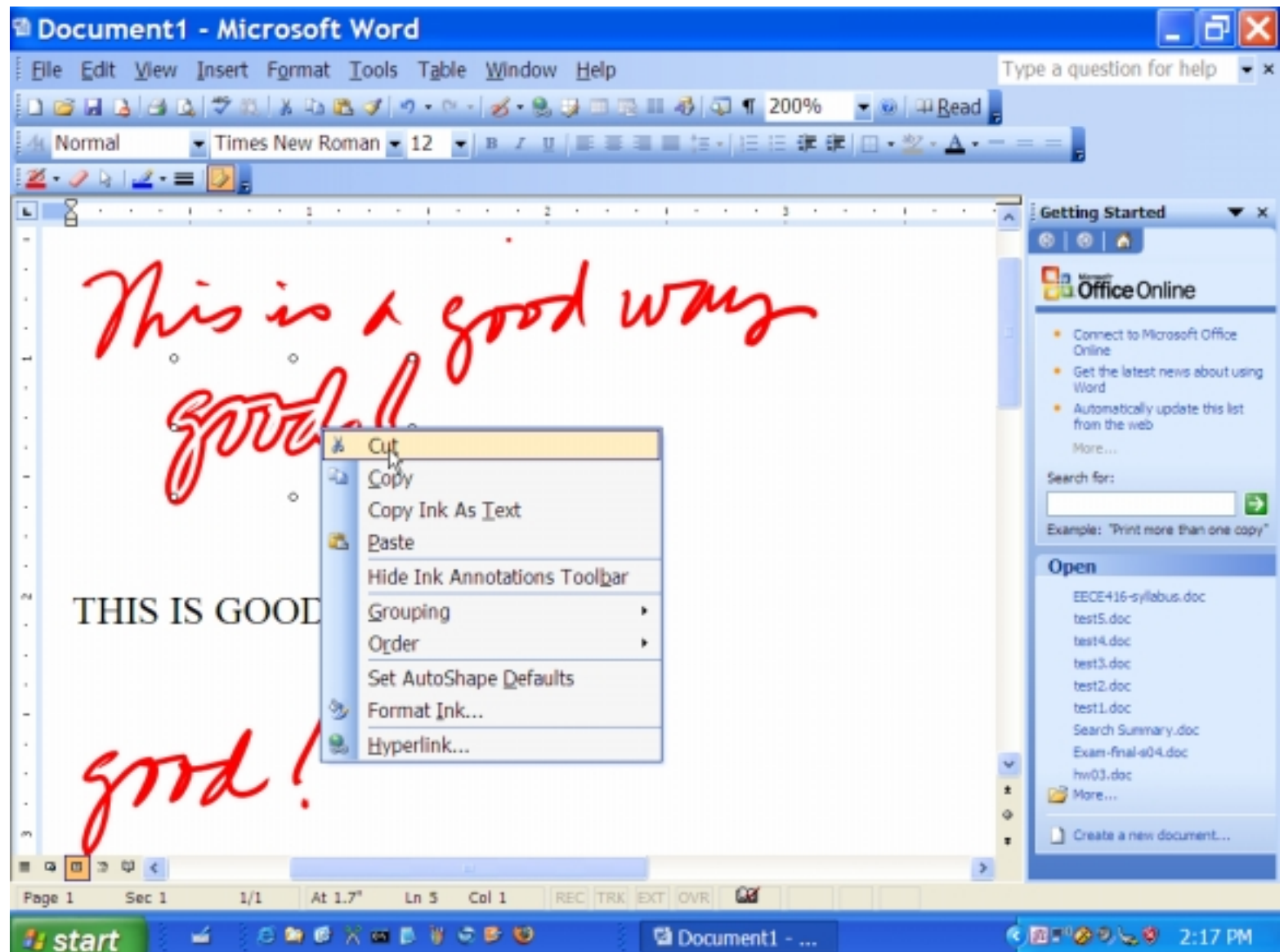
MS Word



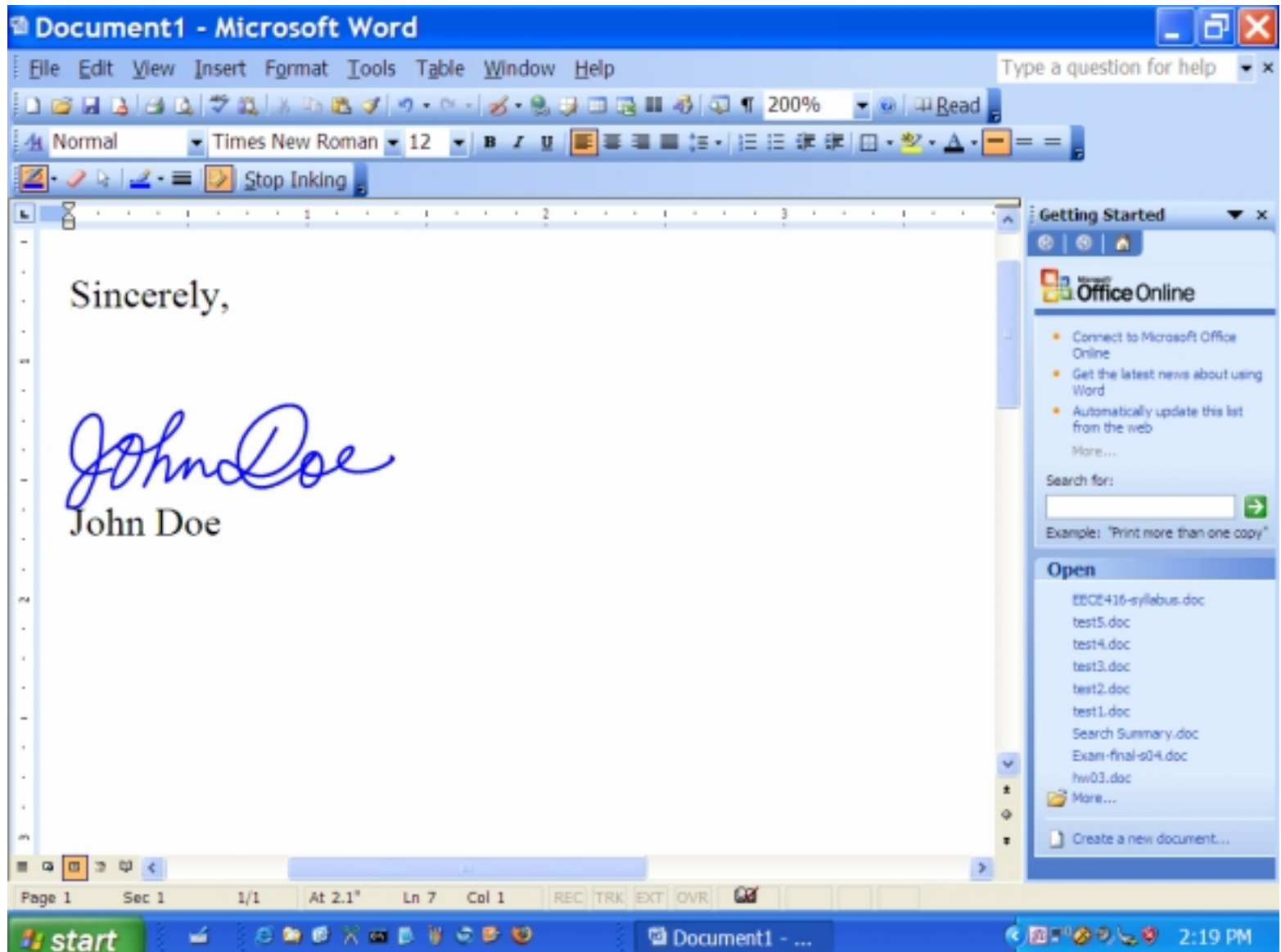
MS Word



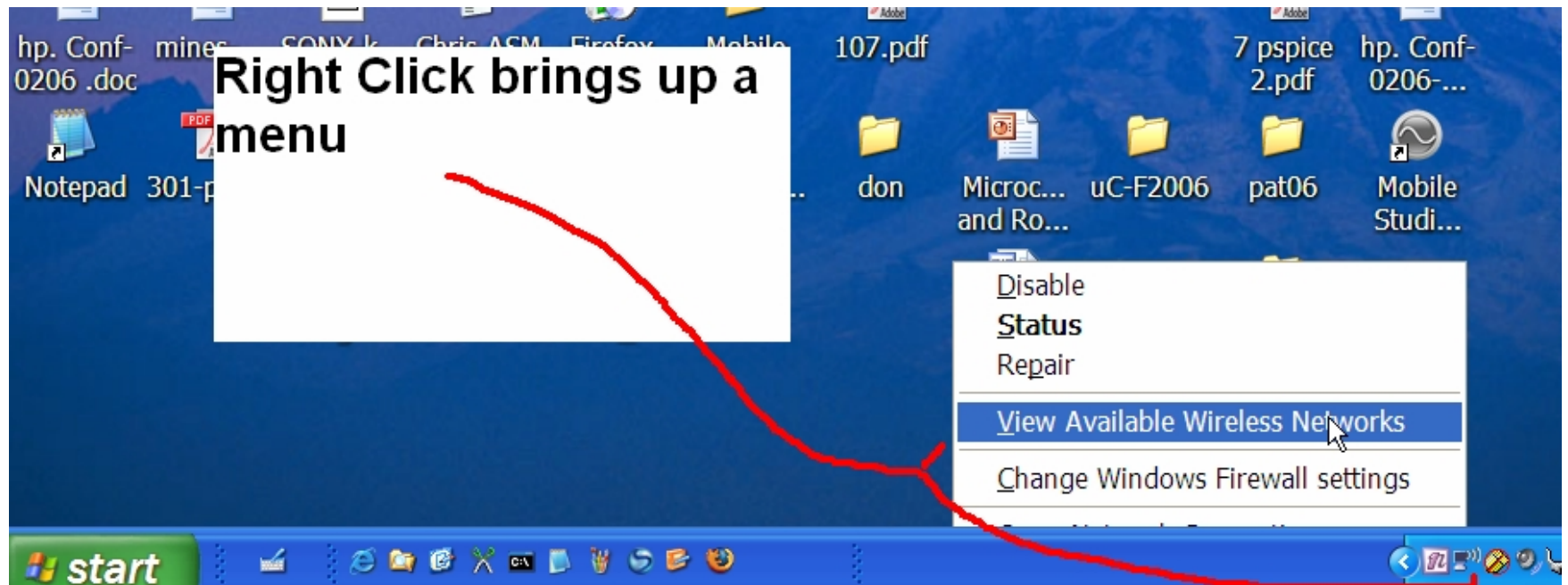
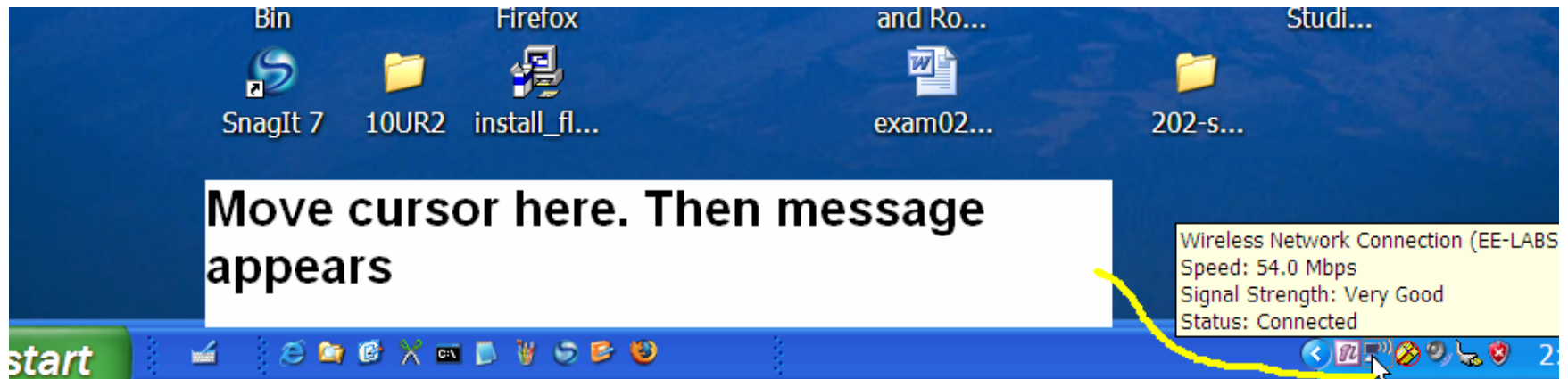
MS Word



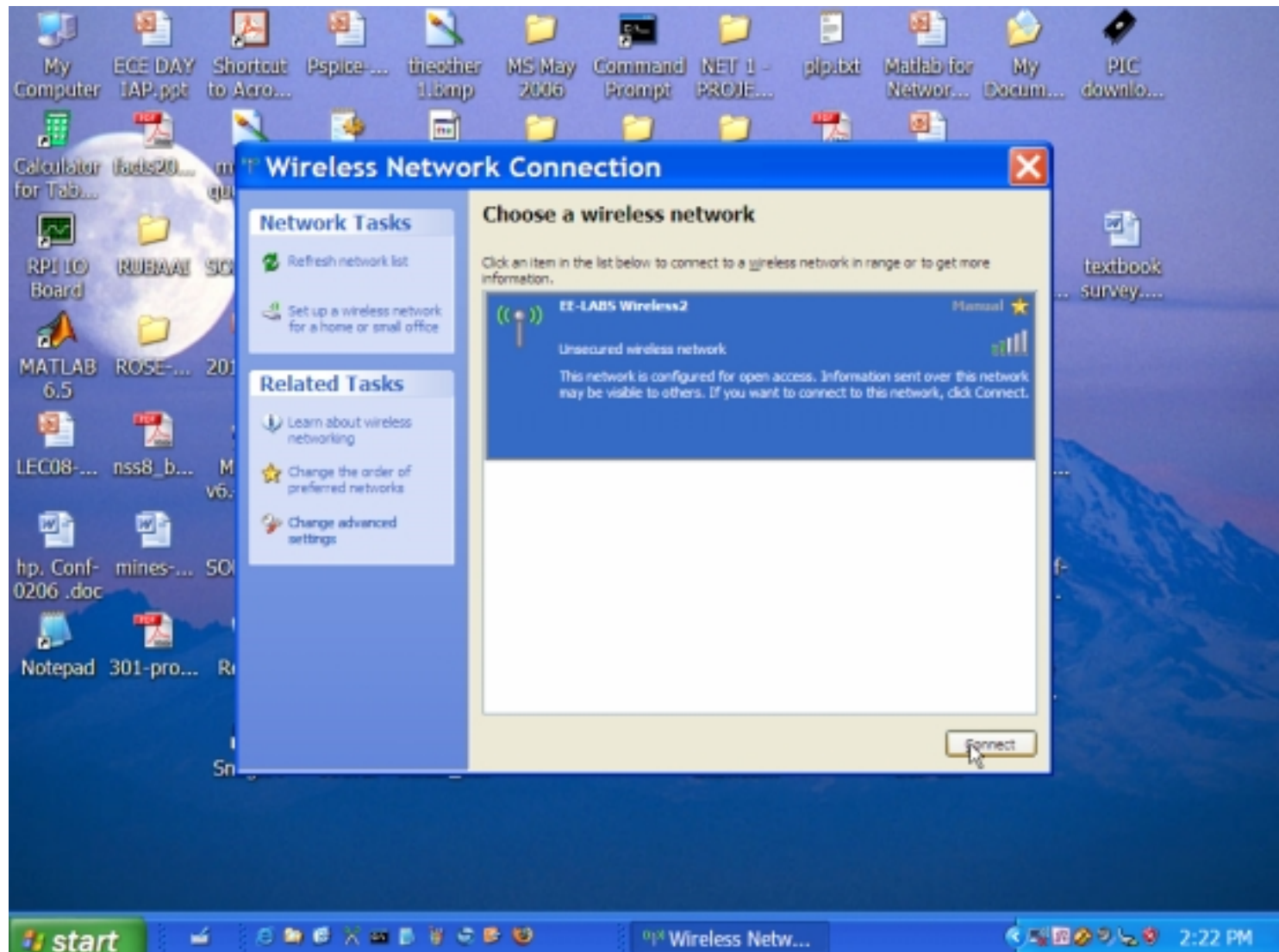
MS Word



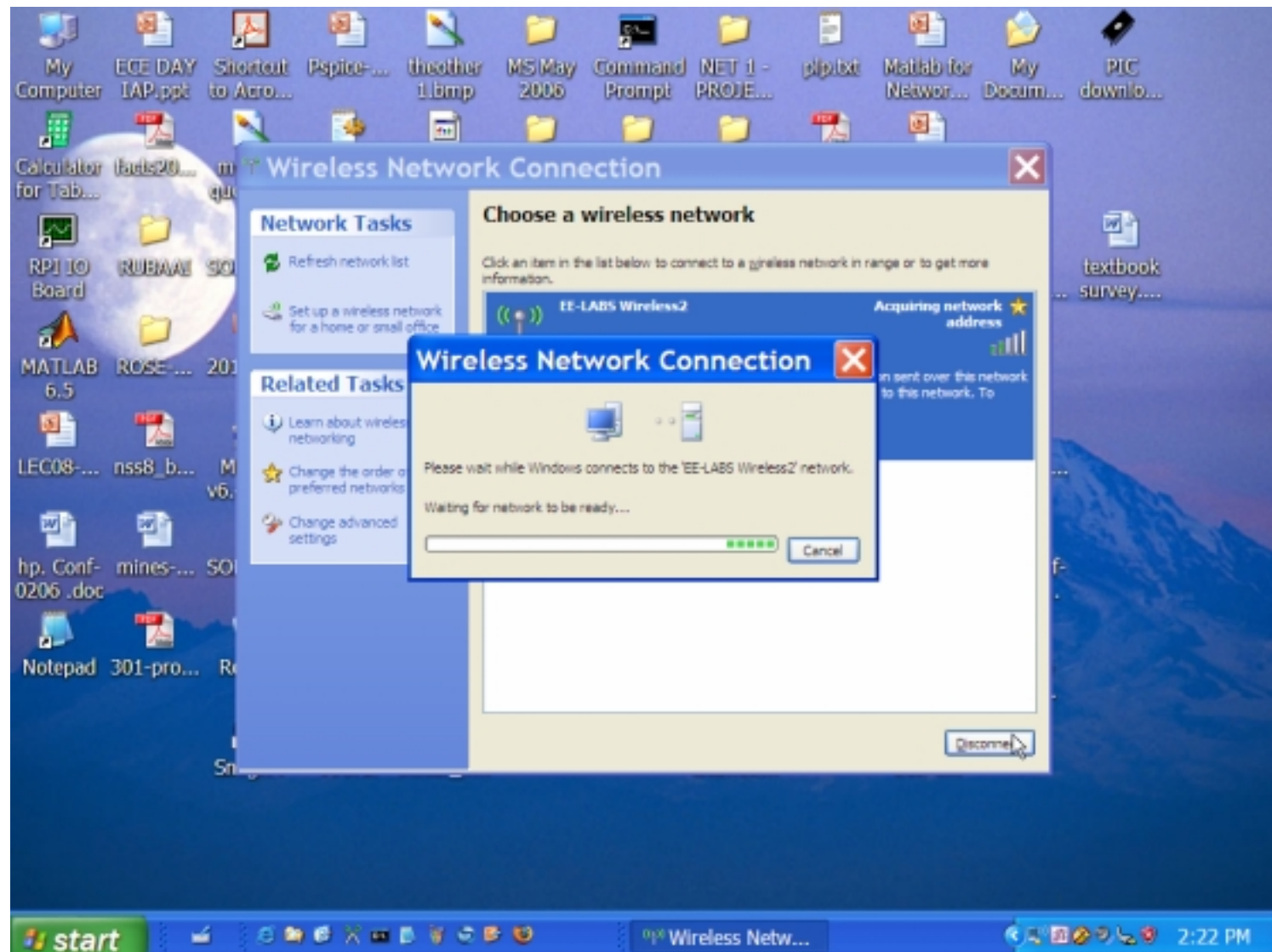
Wireless Internet Access



Wireless Internet Access



Wireless Internet Access



- Now click a browser for Internet access