

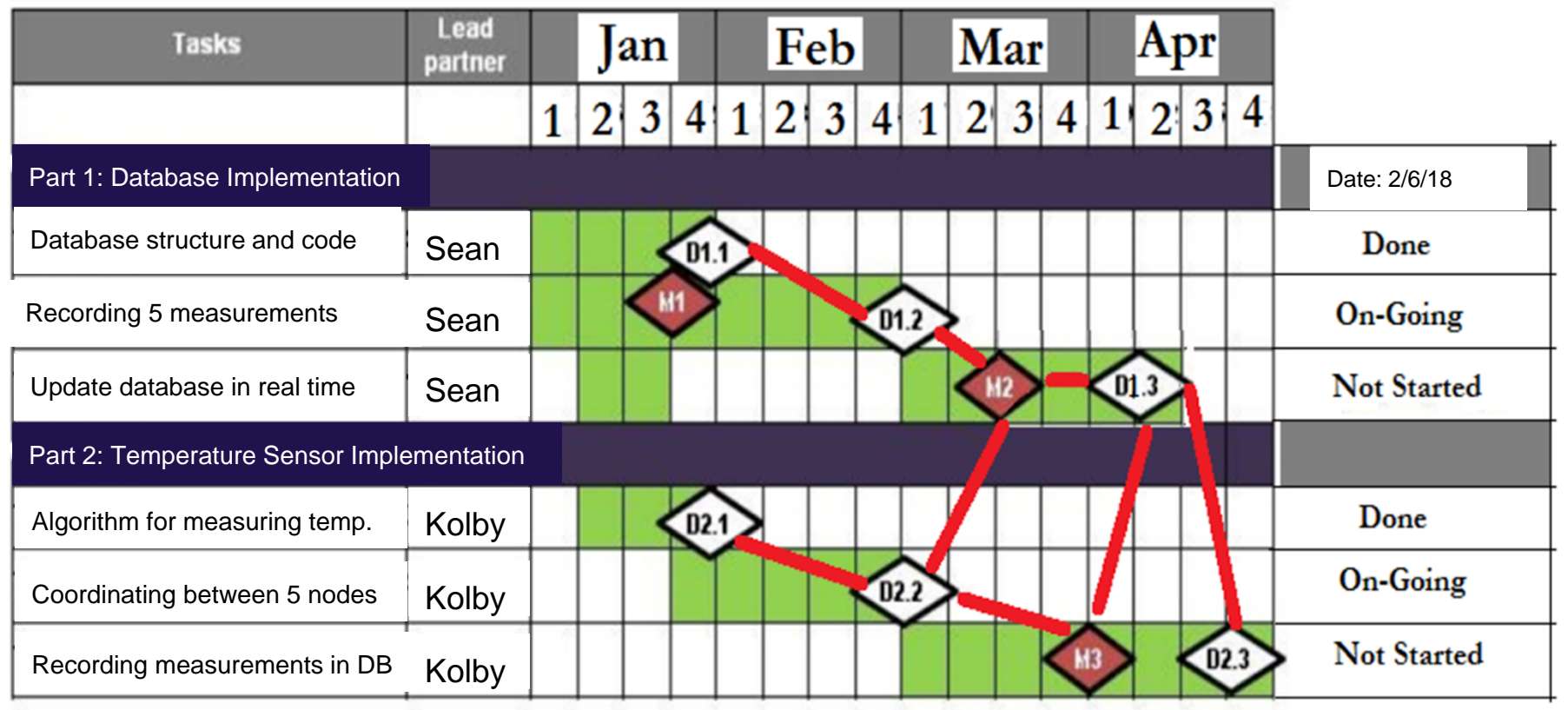
February 6th, 2018

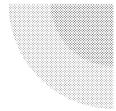
Senior Design Progress Presentation 2

Wireless Temperature Sensor Network

Sean Grant
Kolby Lacy

Milestone Summary





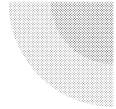
Activity Summary

Highlights:

- Linux bootable for Joule boards on standby
- Code sample for BMP280 IMU achieved
- Can run sensor code on Joule or Raspberry Pi using Python

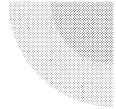
Lowlights:

- Currently waiting on power supply for intel boards
- Unable to load Linux onto the Boards



Risk Management

- Not having the power supply for the Joule boards soon.
- In the meantime, to not fall behind we will:
 - Prepare the Raspberry Pi as our backup



Next Period Activities

Implementation

- Configure the Raspberry Pi to use as the node
- Next major milestone is to test the temperature sensors